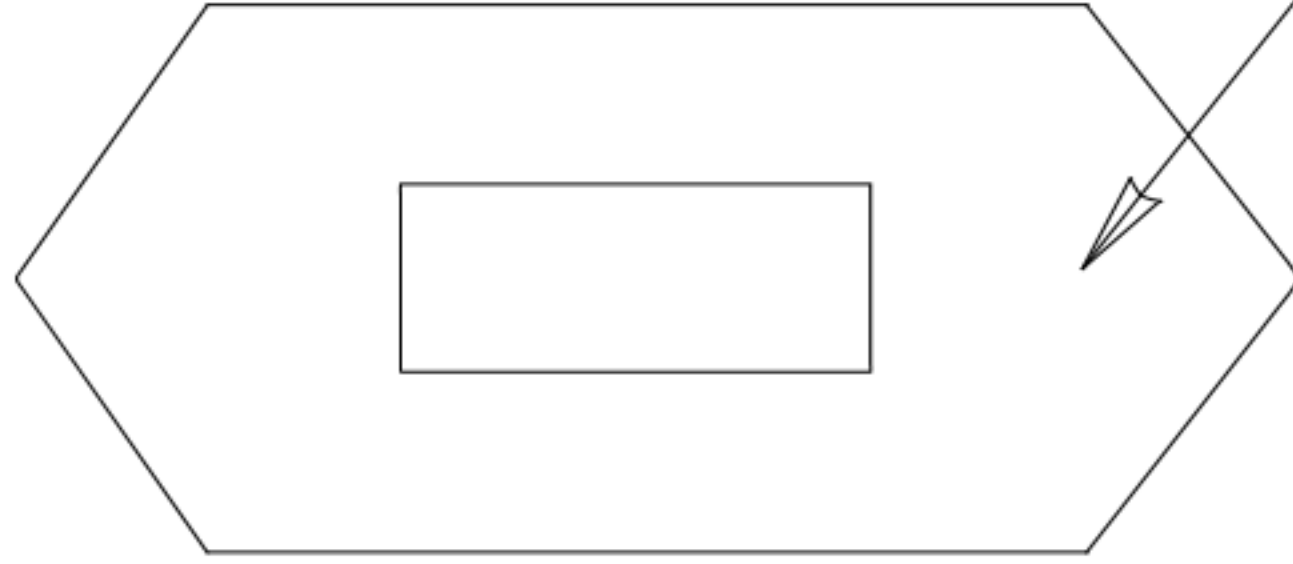
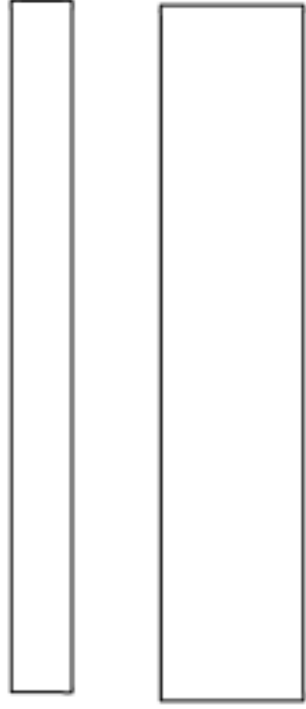
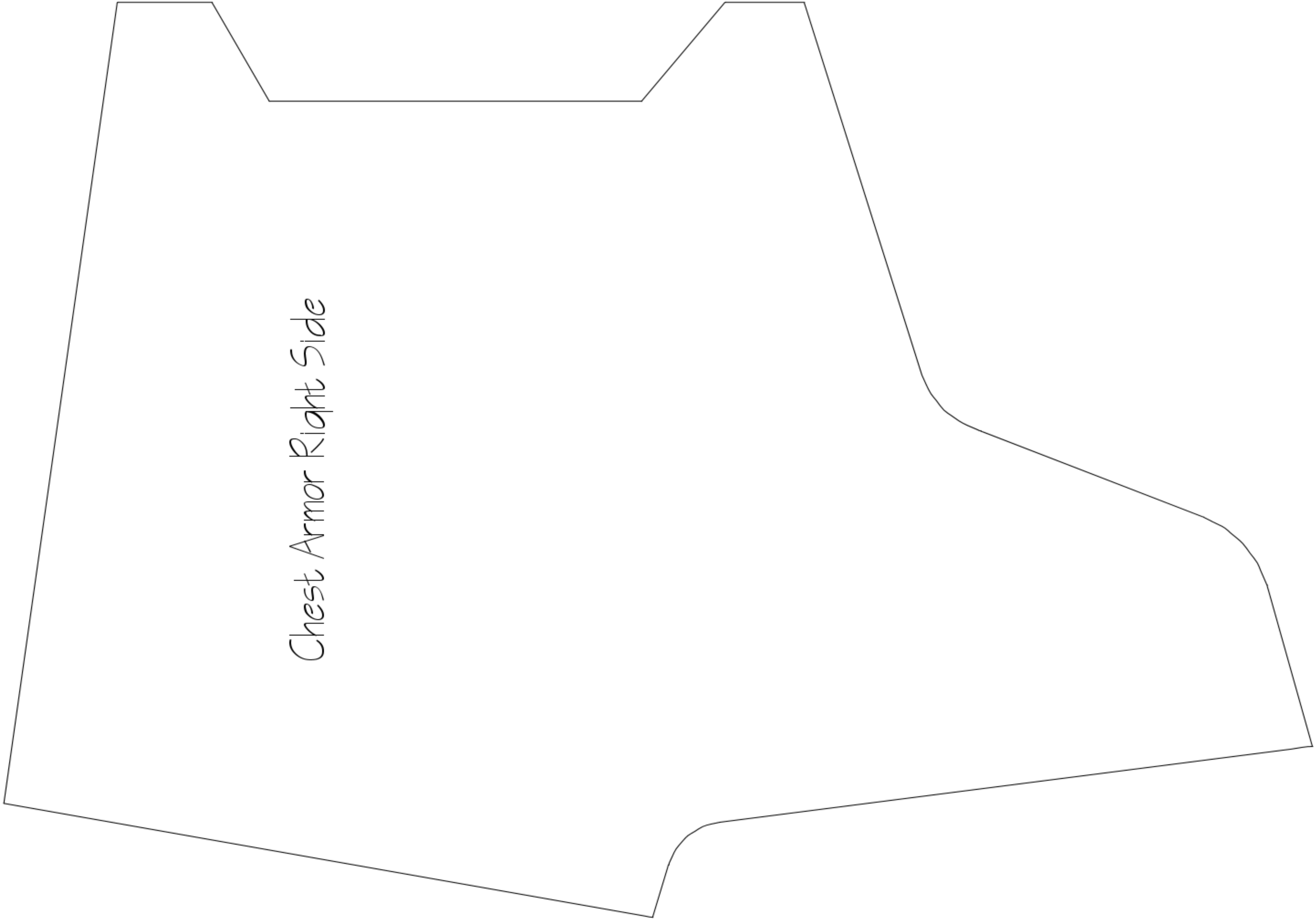


Chest Armor Left Side



Chest Medallion

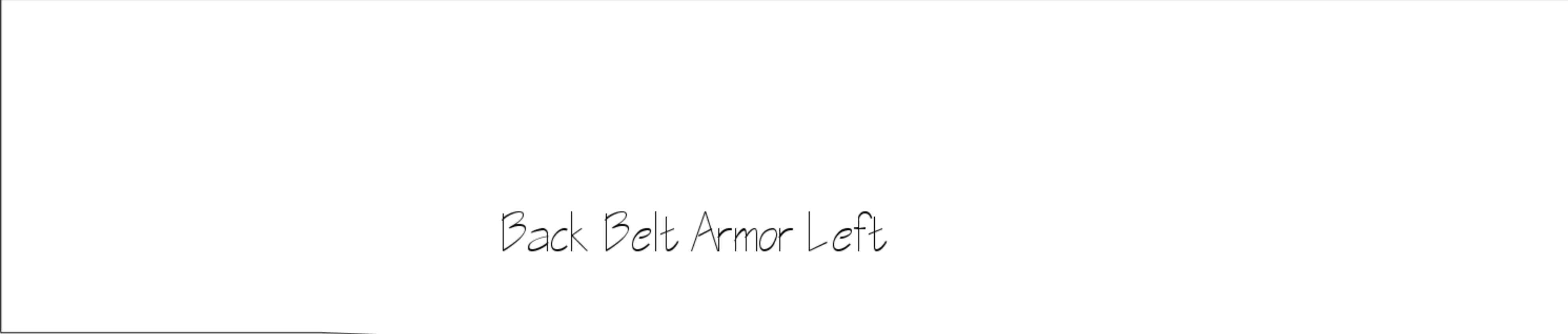
Size - 5'4"



Chest Armor Right Side

Size - 5'4"

Size - 5'4"

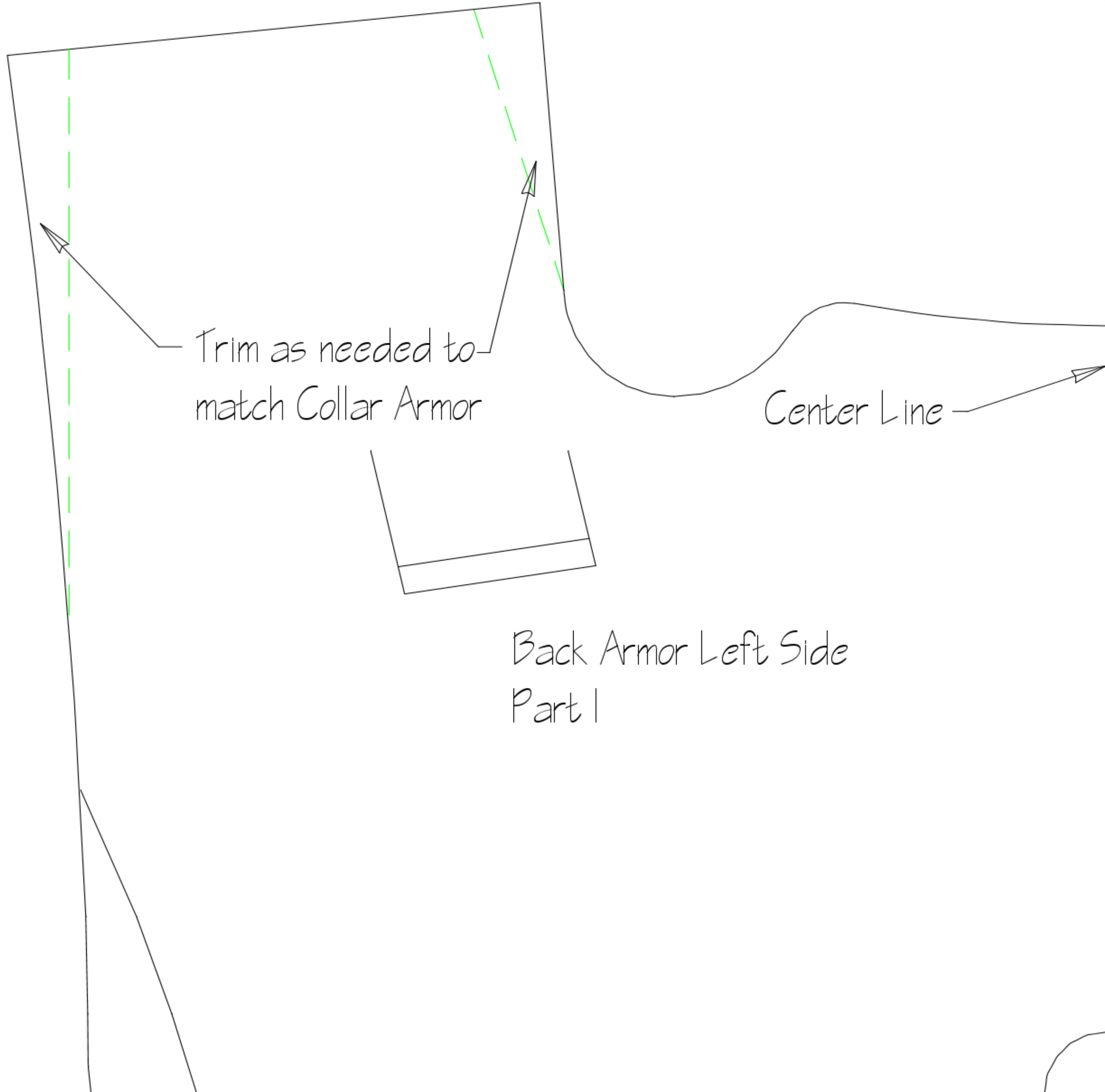


Back Belt Armor Left

Back Belt Armor Right

Size - 5'4"

Size - 5'4"



Trim as needed to match Collar Armor

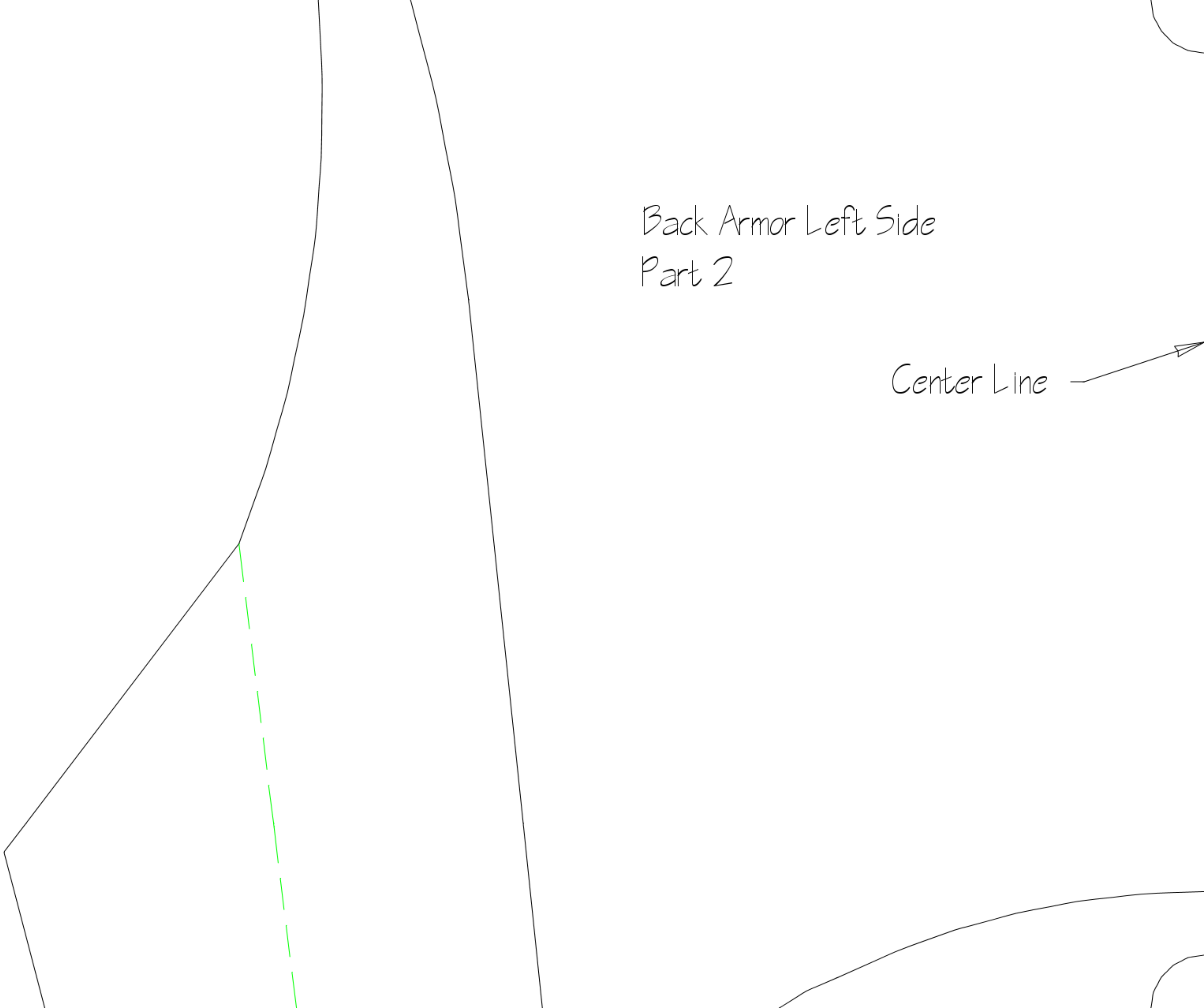
Center Line

Back Armor Left Side
Part 1

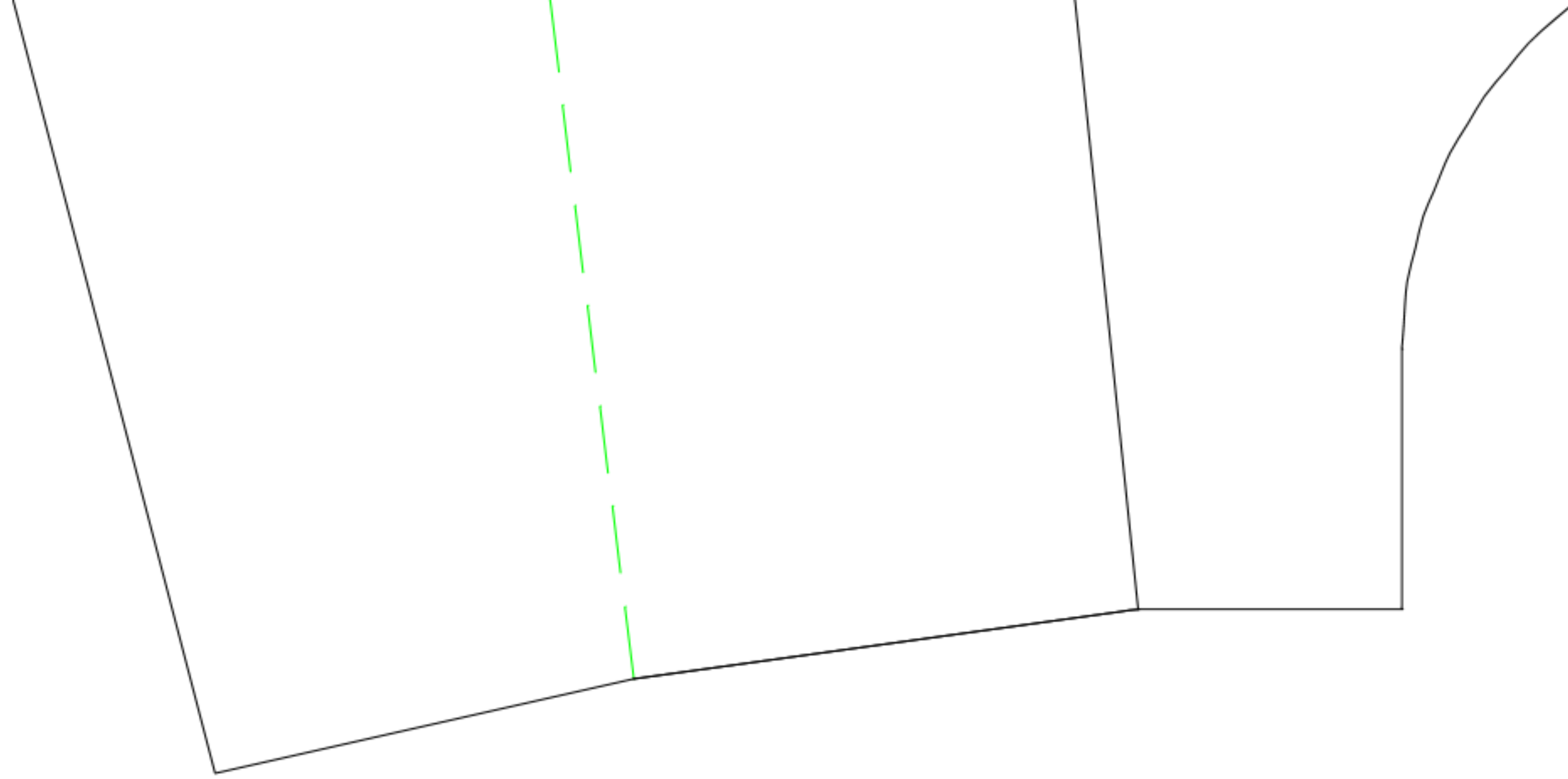
Size - 5'4"

Back Armor Left Side
Part 2

Center Line 

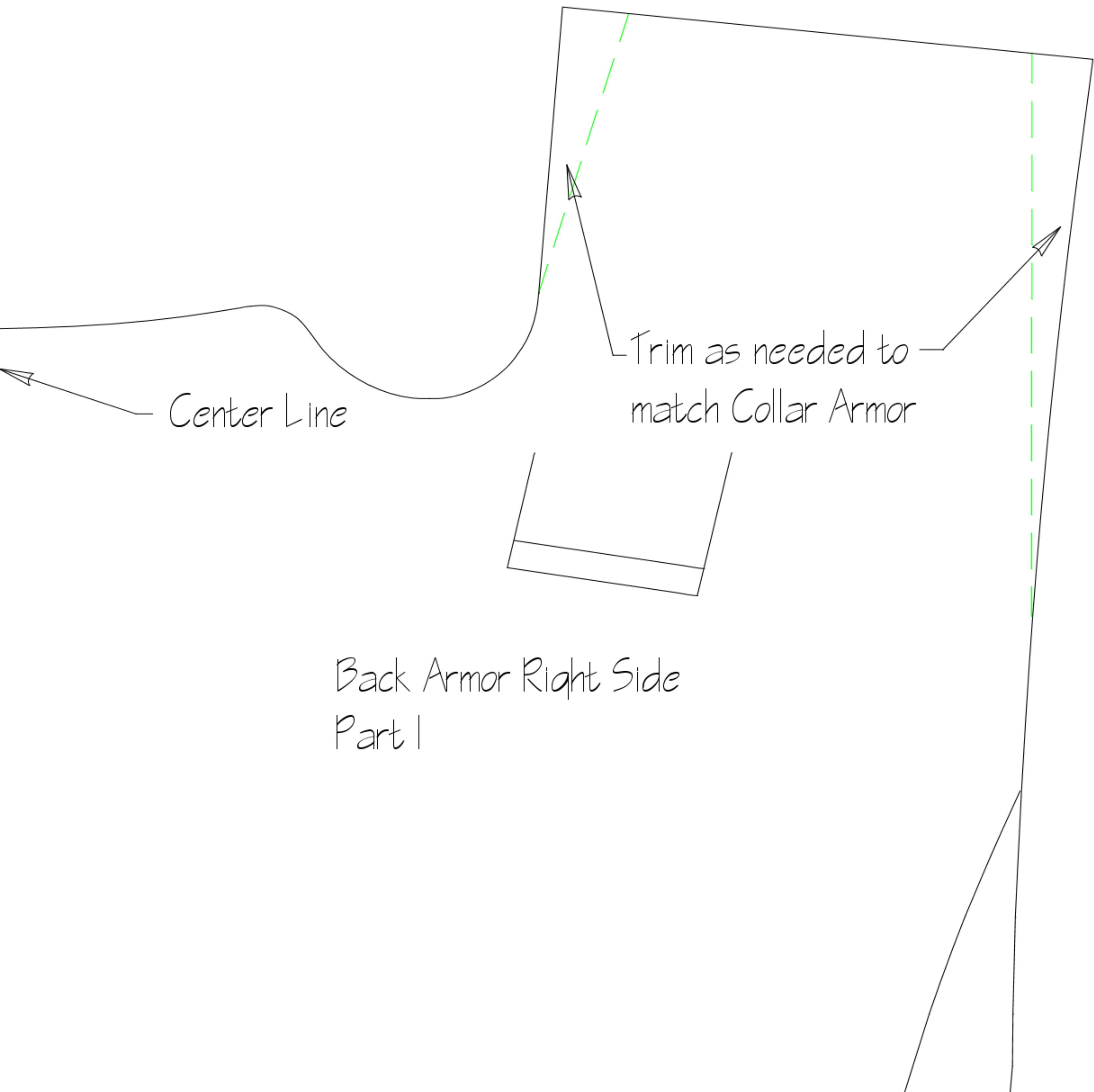


Size - 5'4"



Center Line 

Back Armor Left Side
Part 3



Center Line

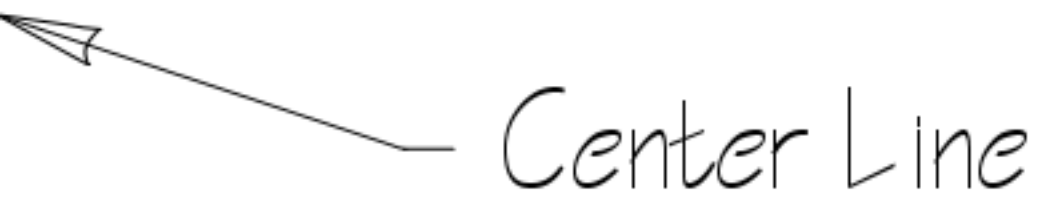
Trim as needed to
match Collar Armor

Back Armor Right Side
Part I

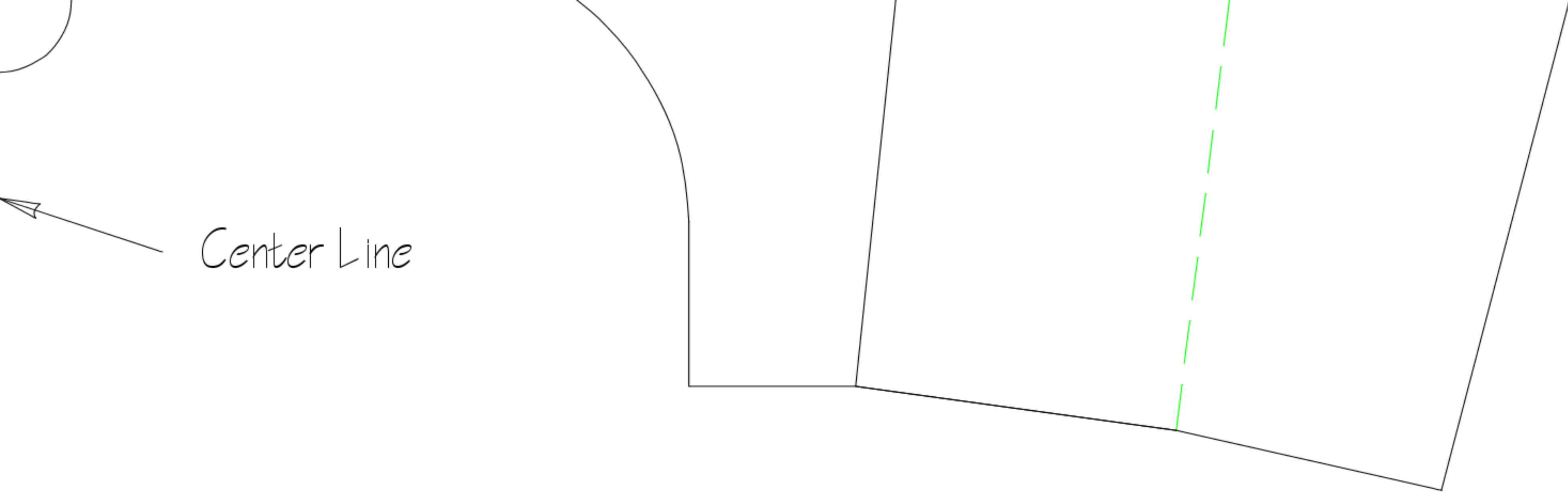
Size - 5'4"

Back Armor Right Side
Part 2

Center Line



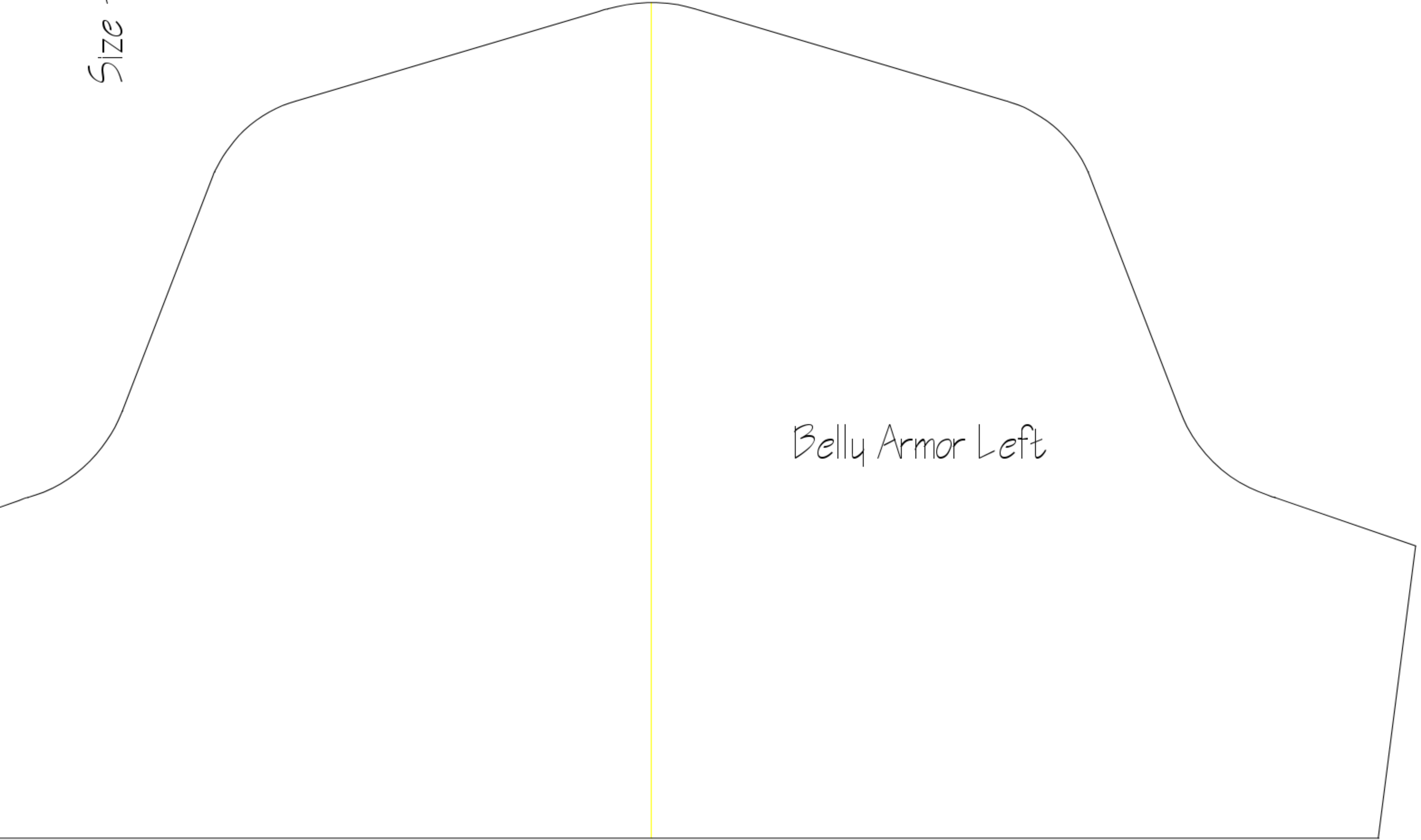
Size - 5'4"



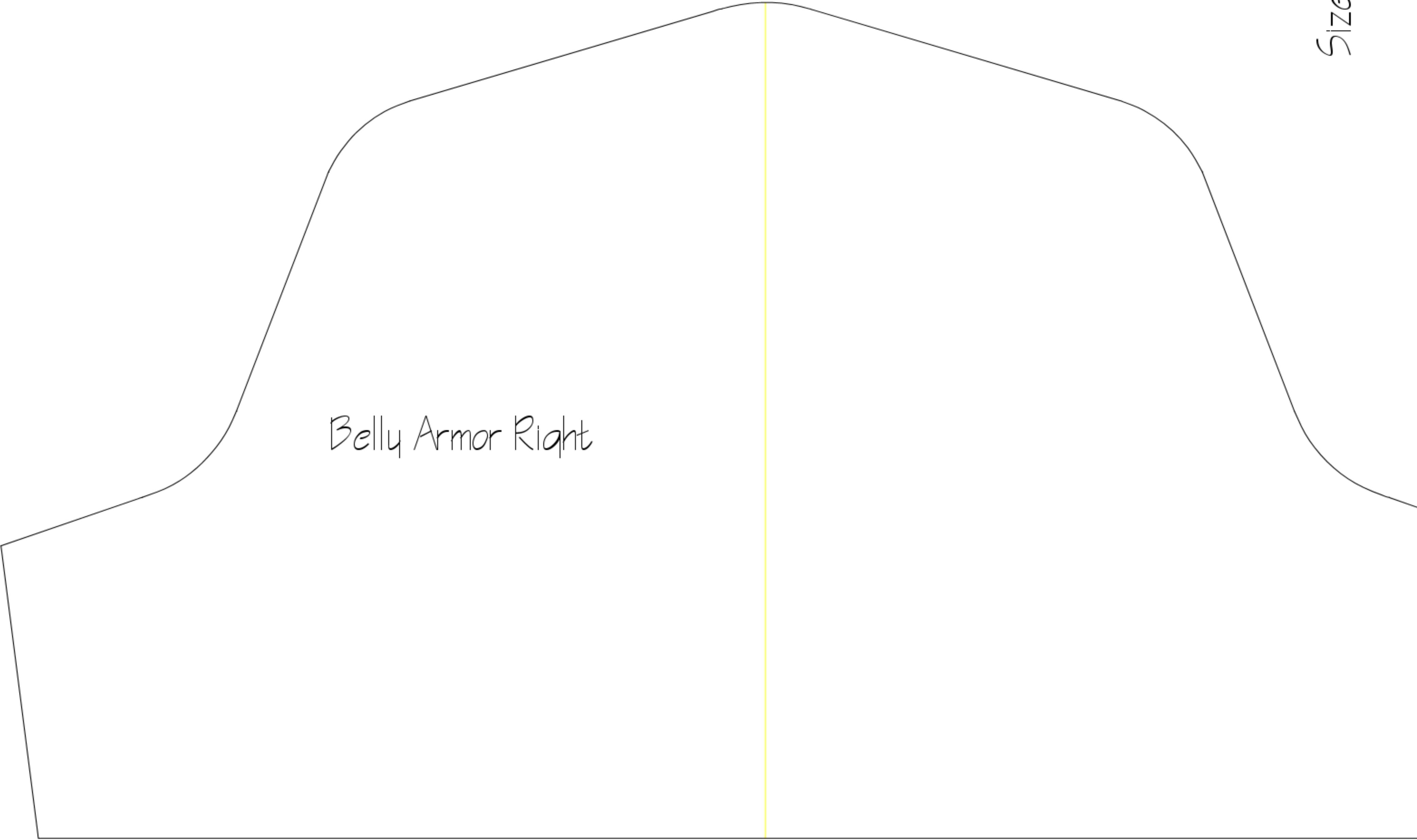
Size - 5'4"

Back Armor Right Side
Part 3

Size - 5'4"

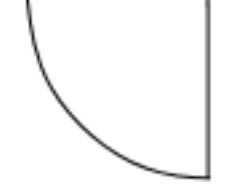


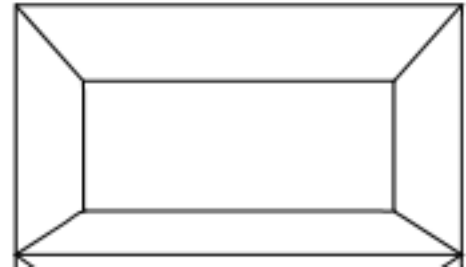
Belly Armor Left



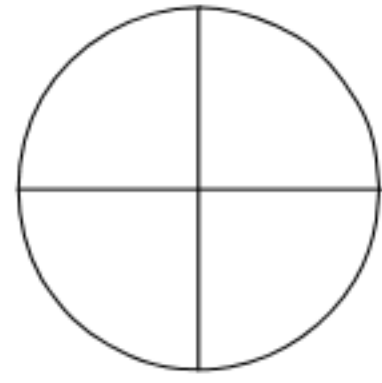
Belly Armor Right

Size - 5'4"





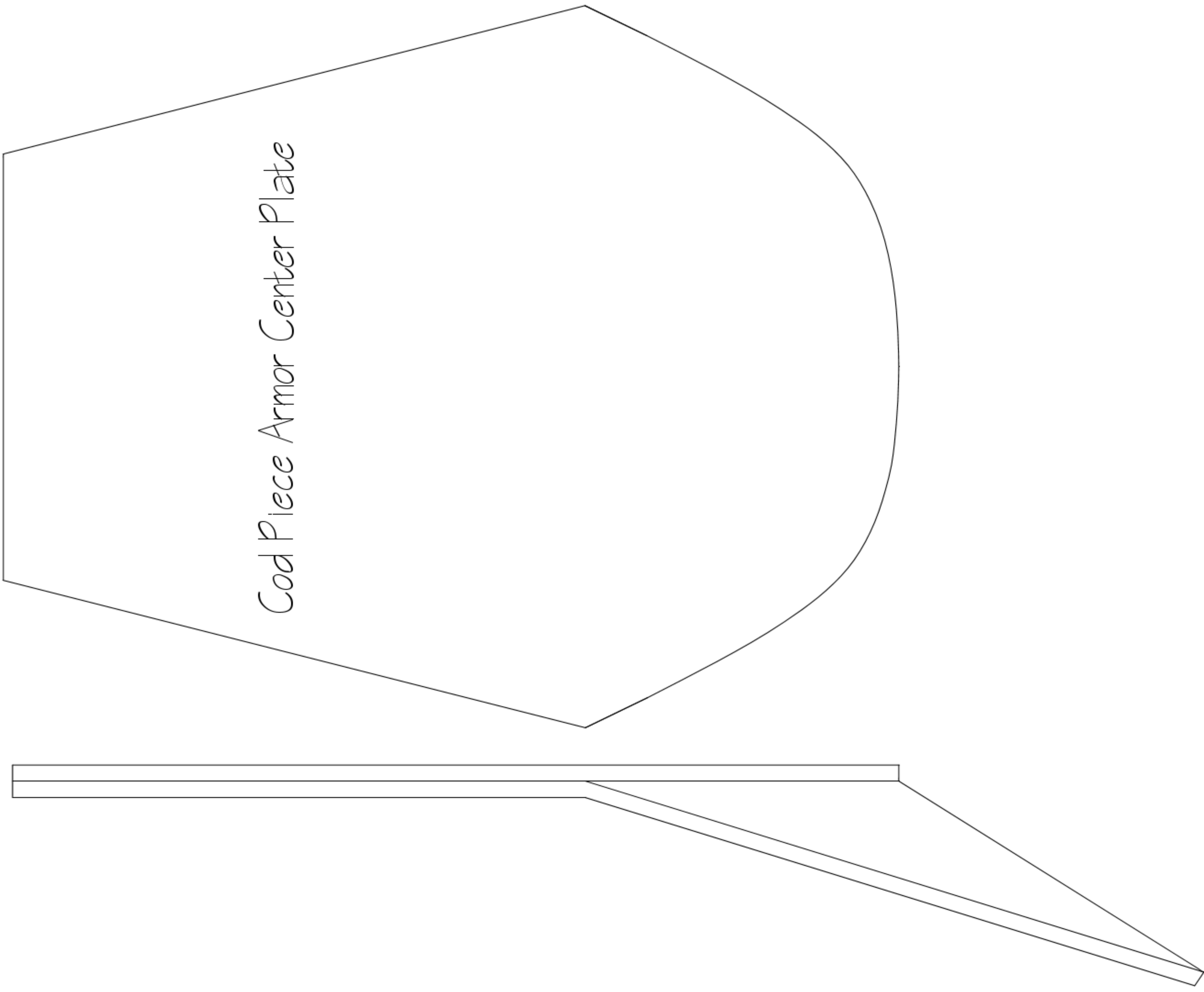
Cod Piece Armor Center

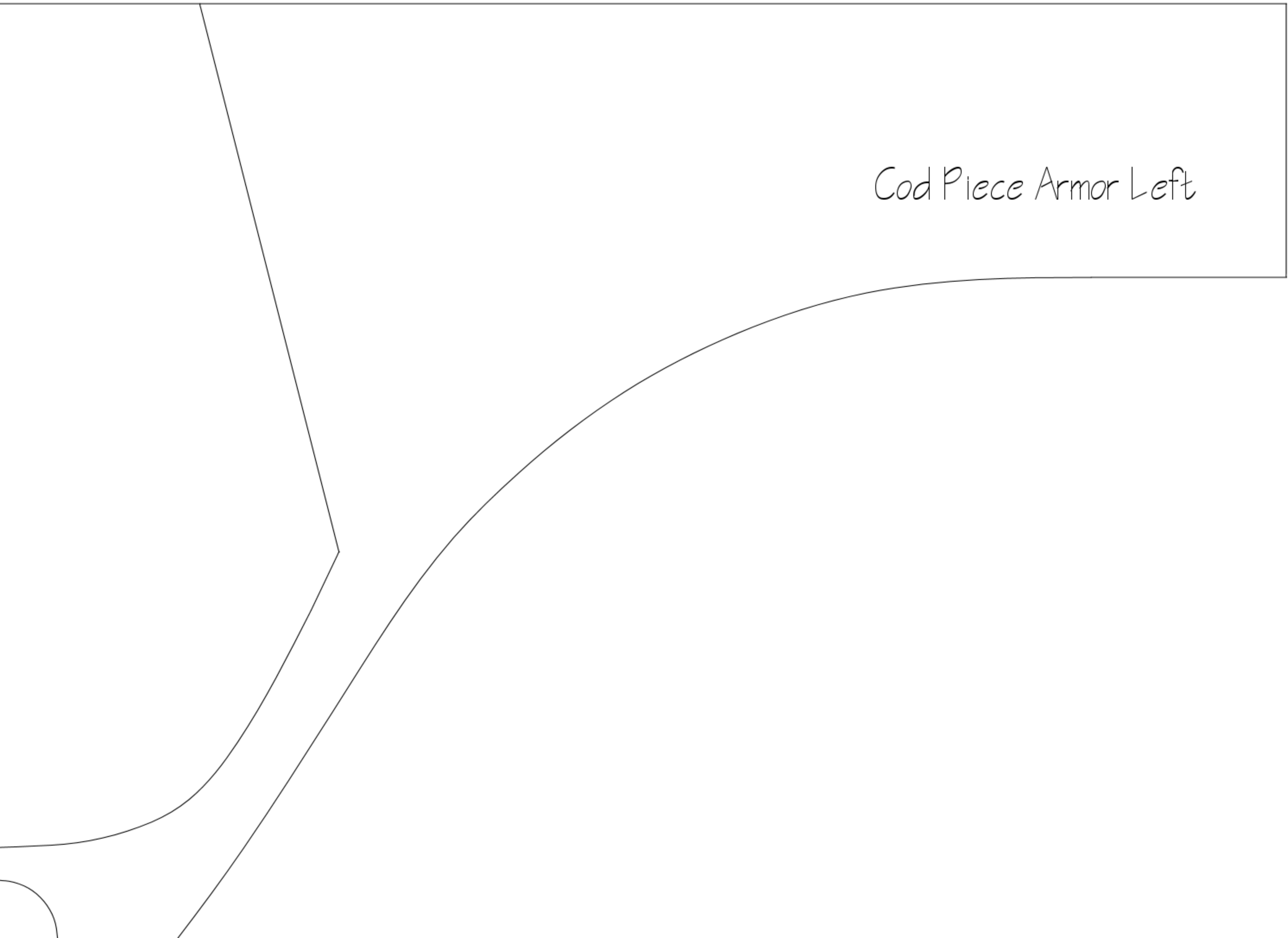


Size - 5'4"

Cod Piece Armor Side View

Size - 5'4"



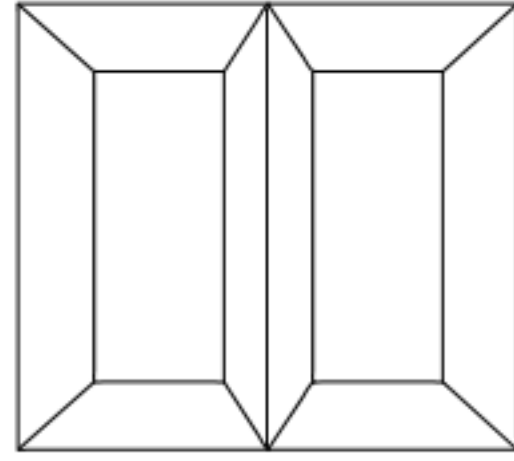


Cod Piece Armor Left

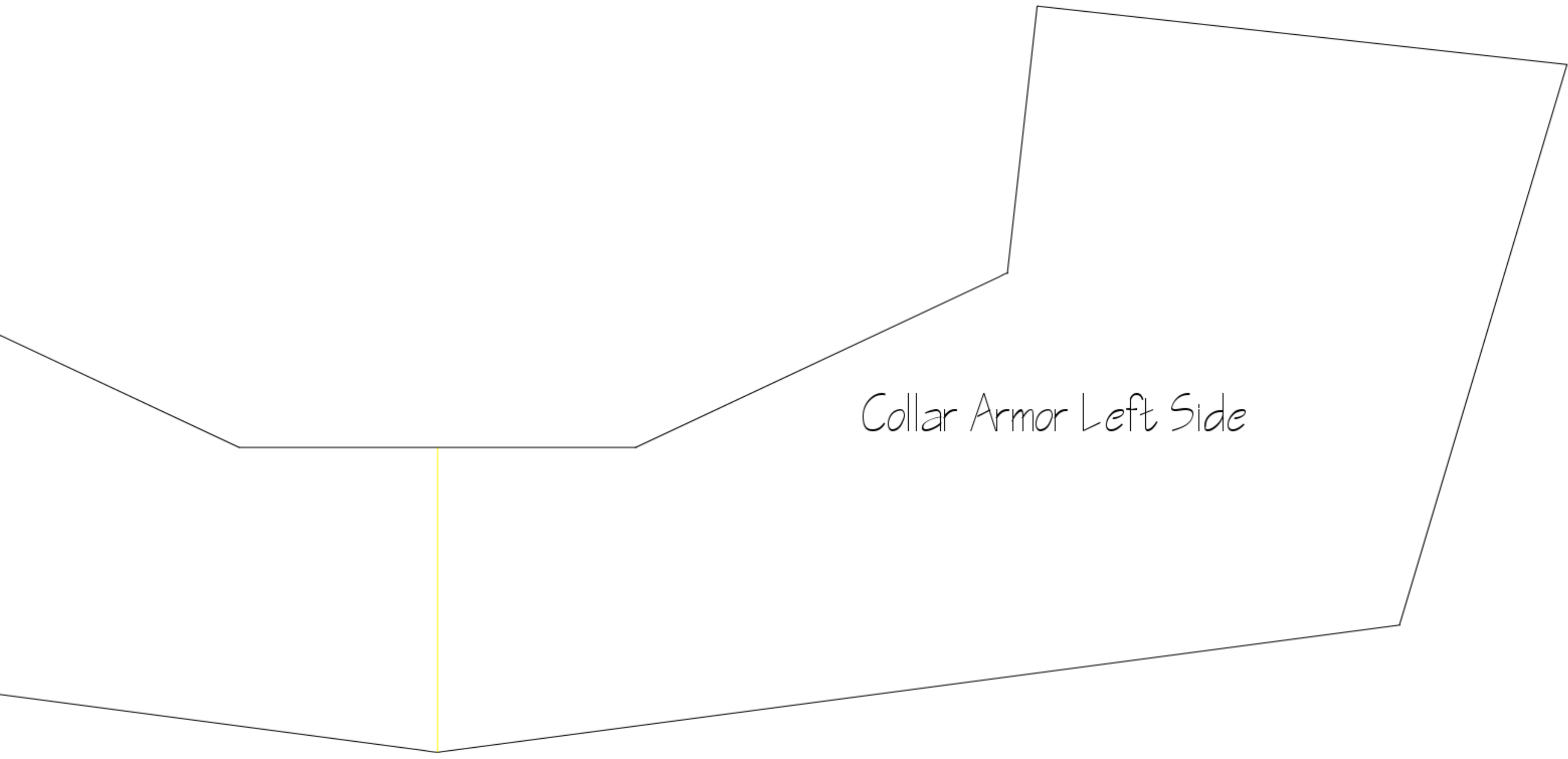
Size - 5'4"

Size - 5'4"

Cod Piece Armor Right



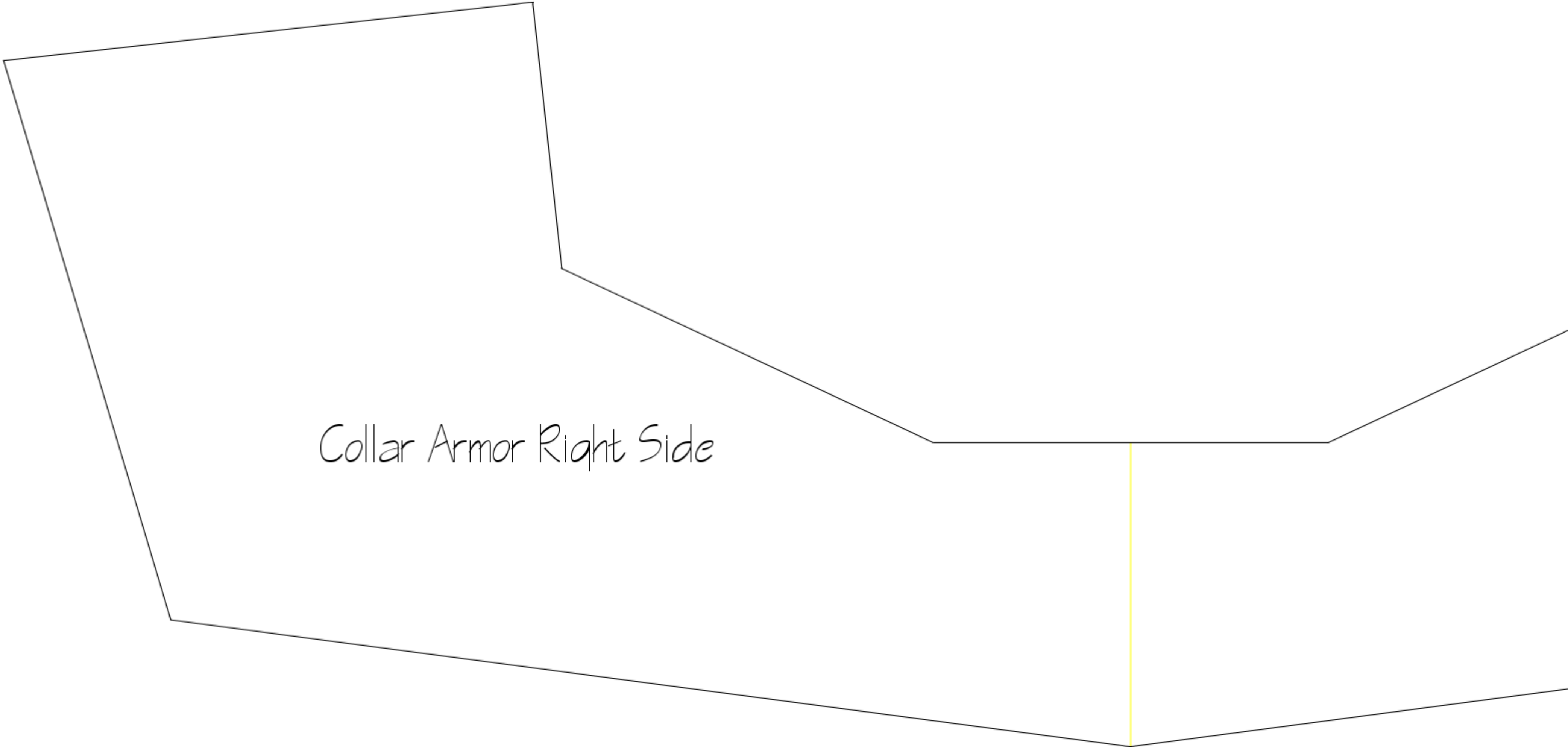
Size - 5'4"

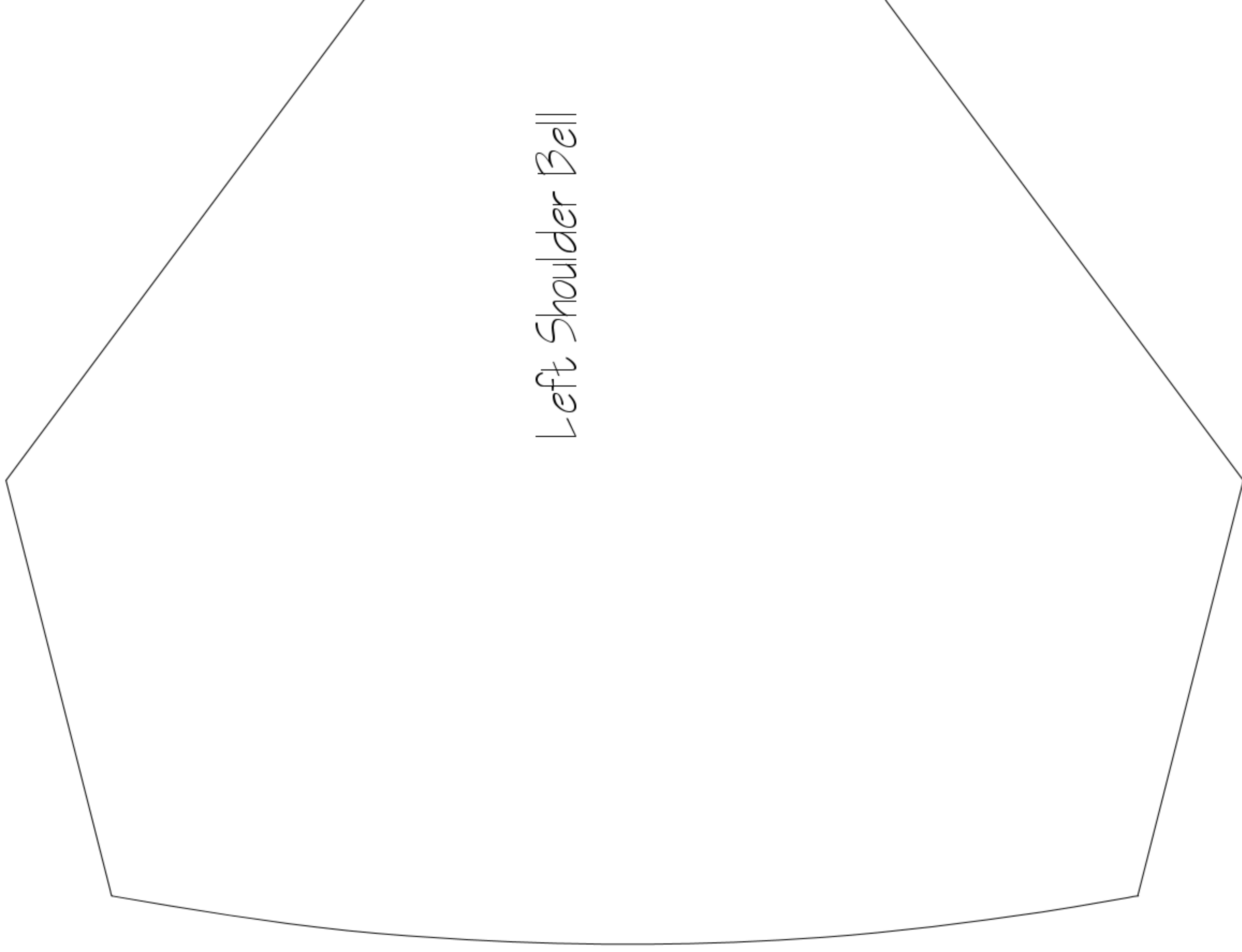


Collar Armor Left Side

Size - 5'4"

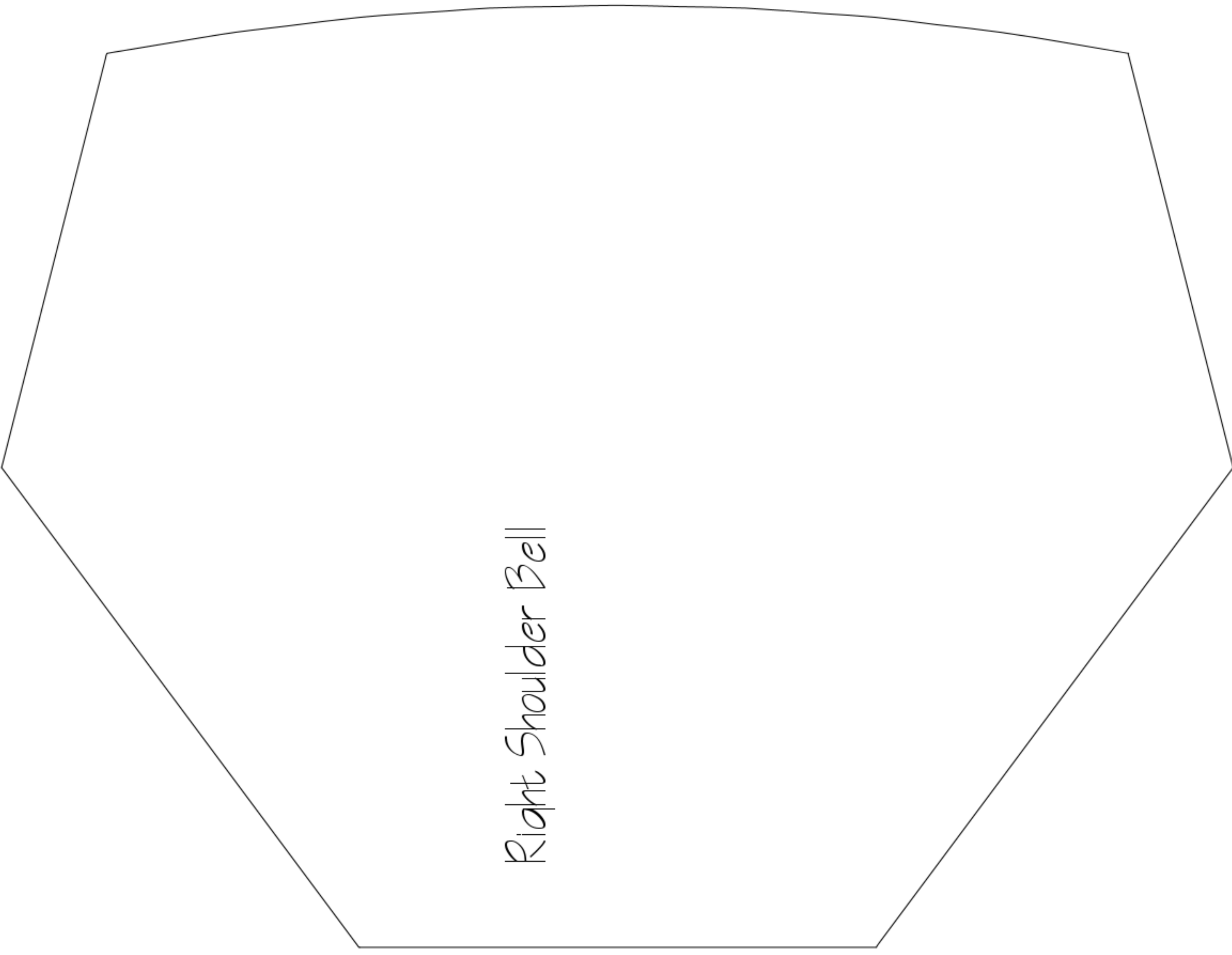
Collar Armor Right Side





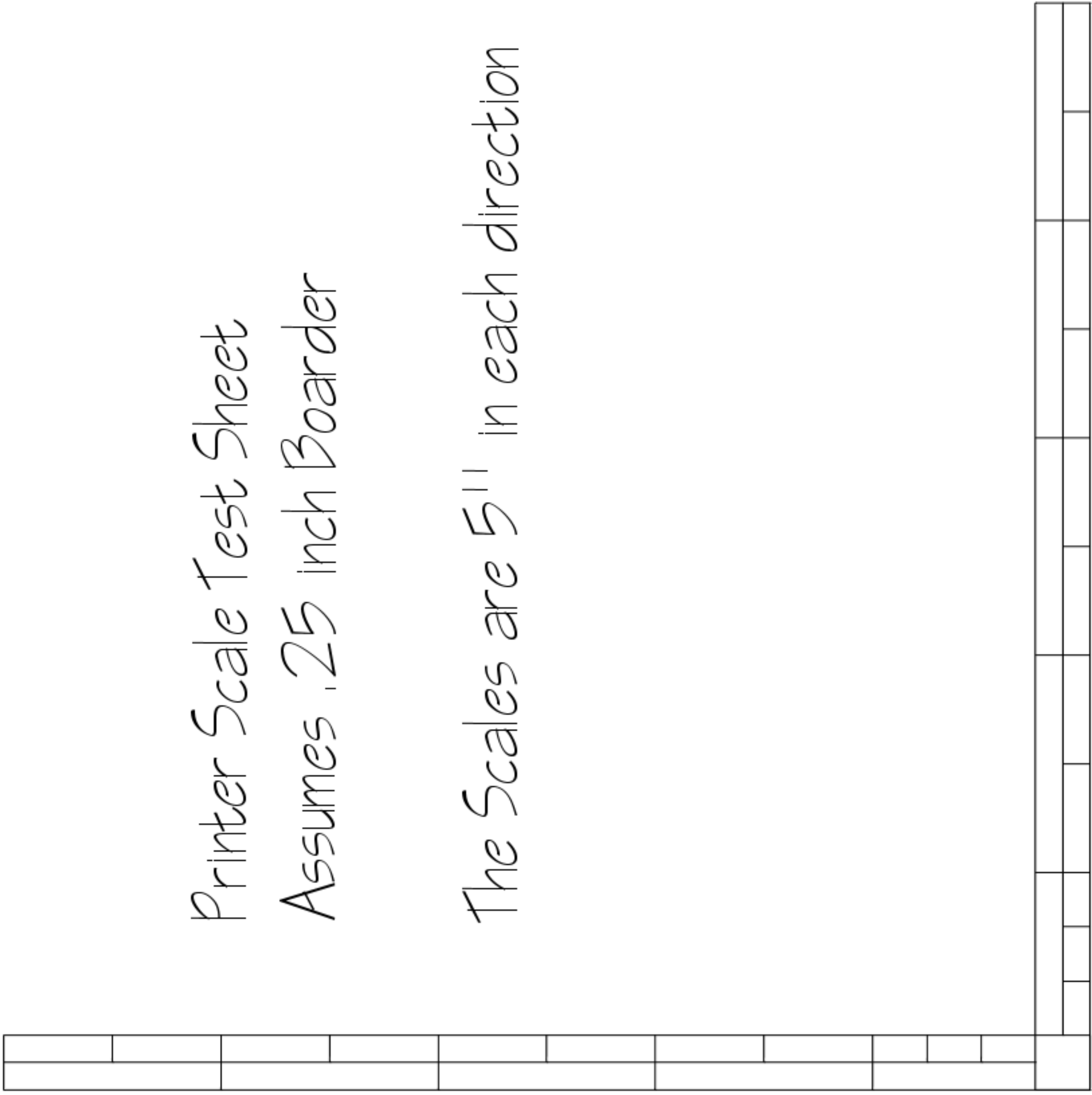
Left Shoulder Bell

Size - 5' 4"



Right Shoulder Bell

Size - 5'4"



Printer Scale Test Sheet
 Assumes .25 inch Border

The Scales are 5'' in each direction