

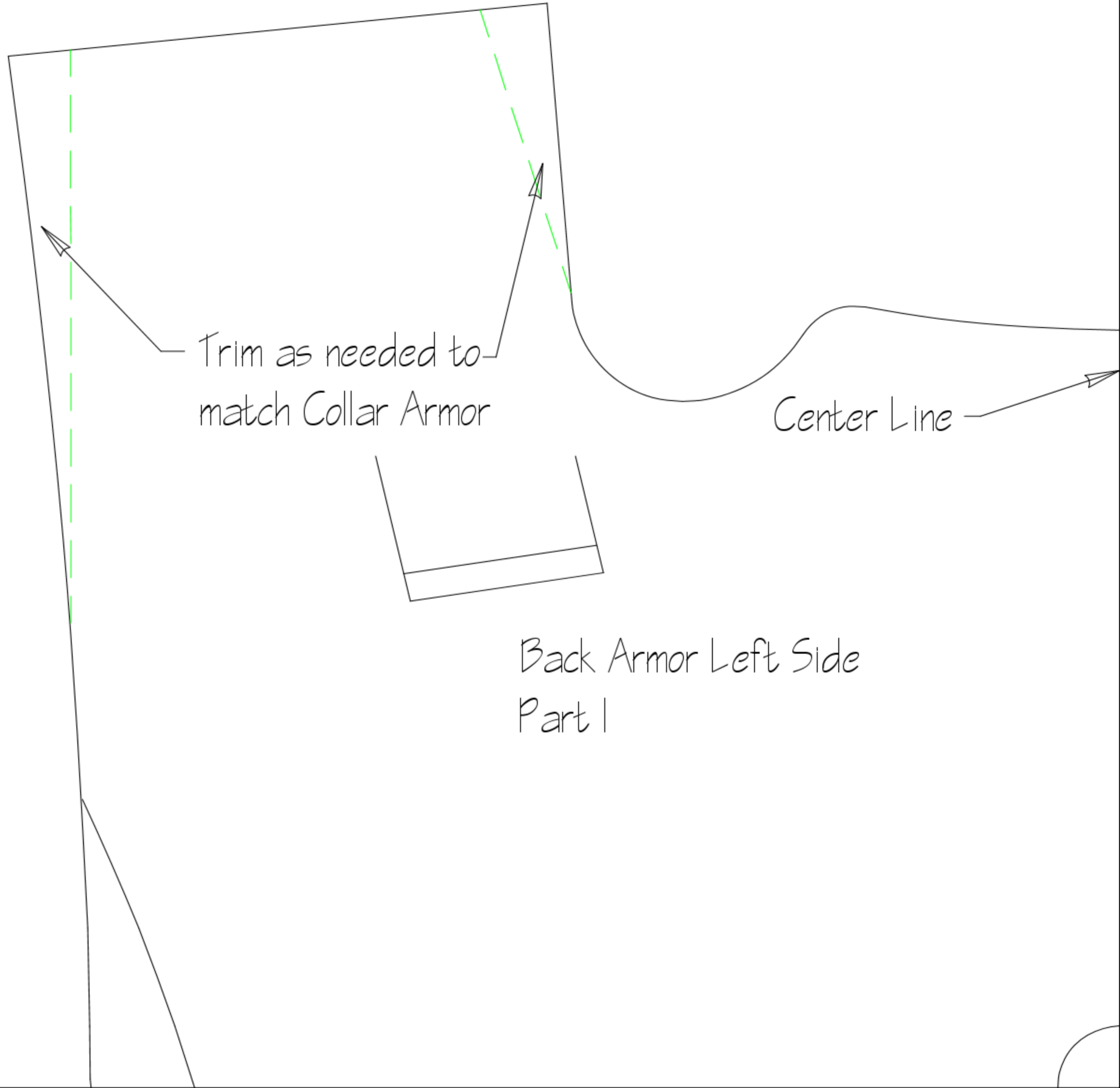
Size - 5'3"

Back Belt Armor Left

Size - 5'3"

Back Belt Armor Right

Size - 5'3"



Trim as needed to  
match Collar Armor

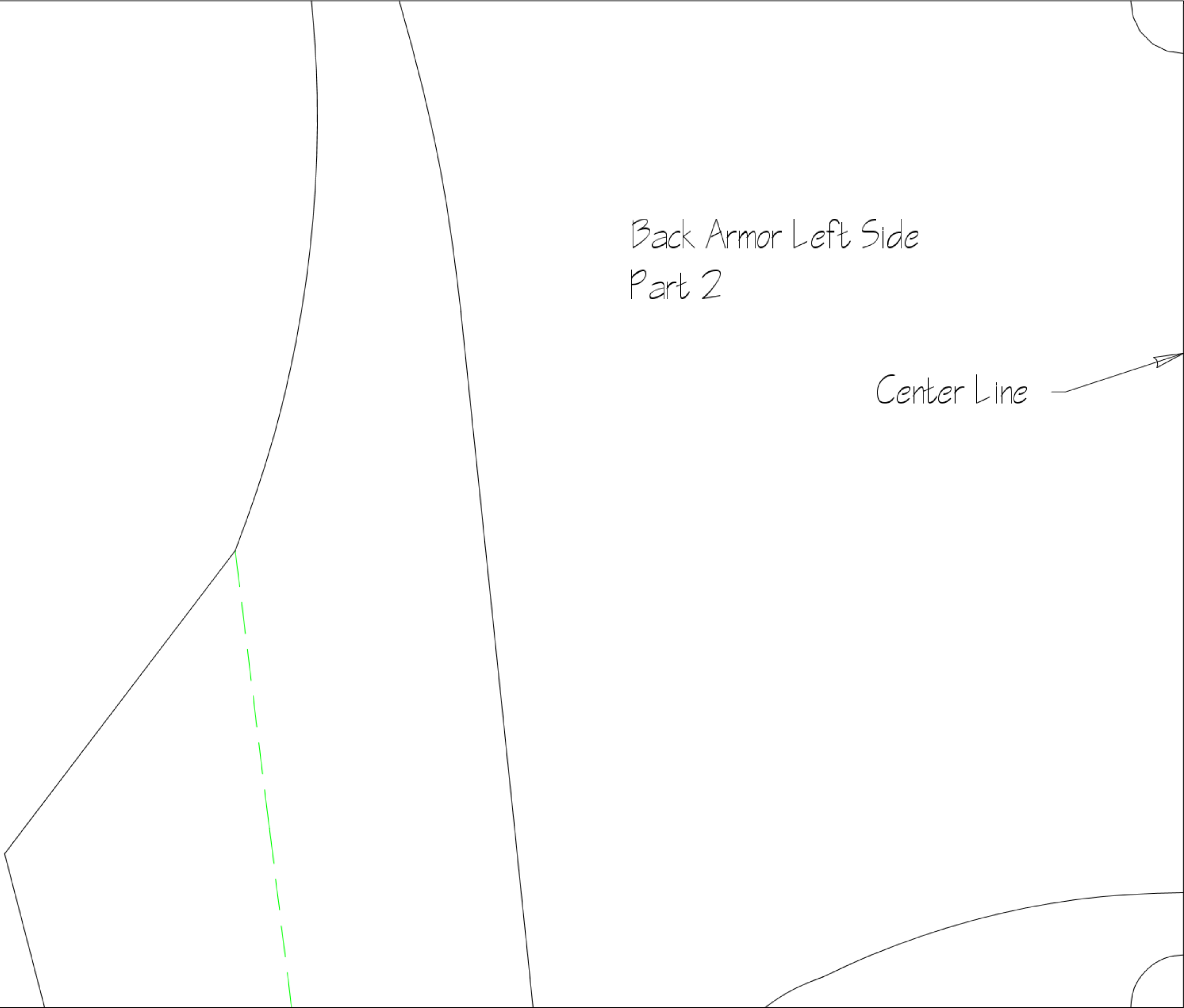
Center Line

Back Armor Left Side  
Part 1

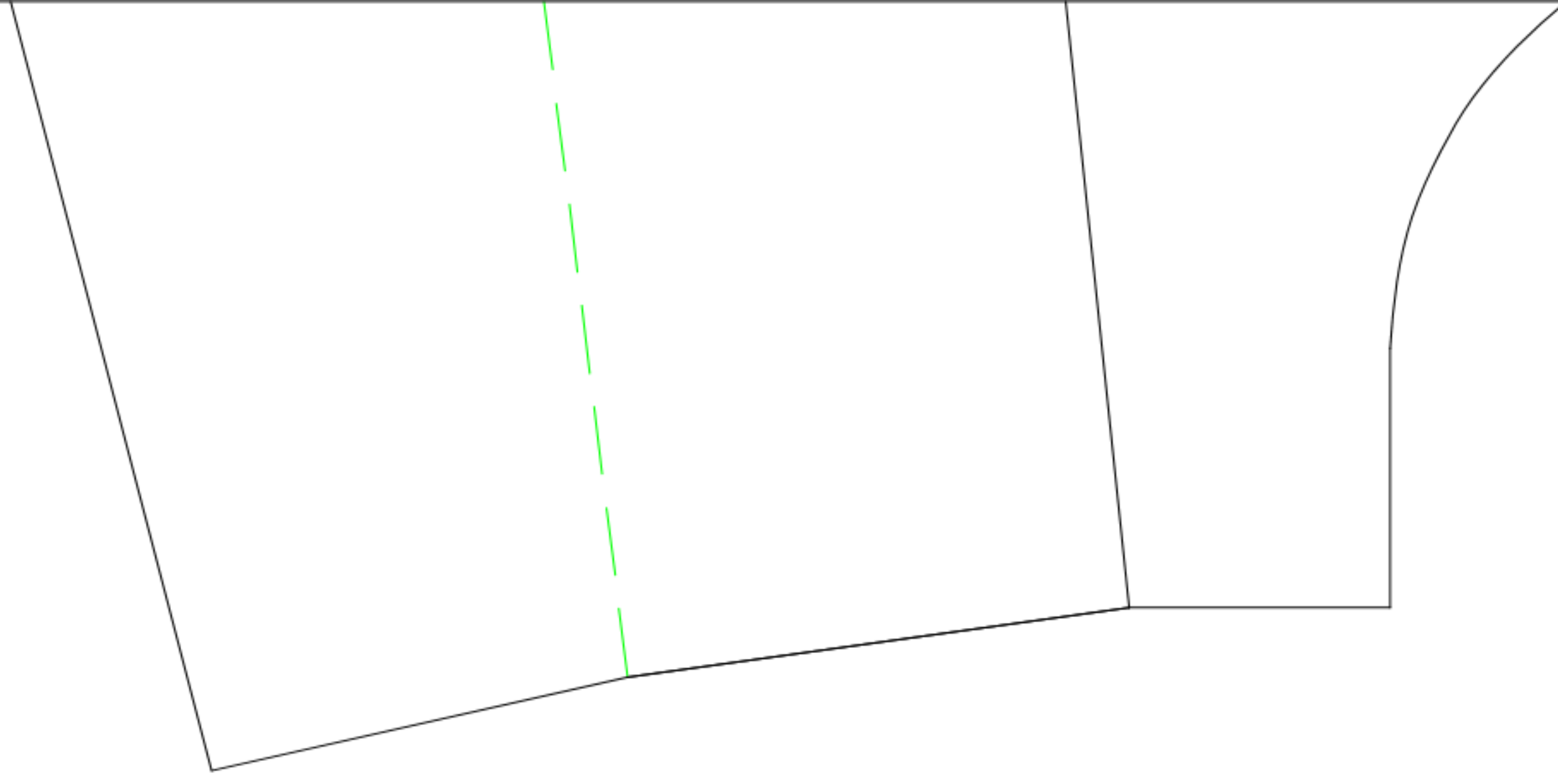
Size - 5'3"

Back Armor Left Side  
Part 2

Center Line



Size - 5'3"

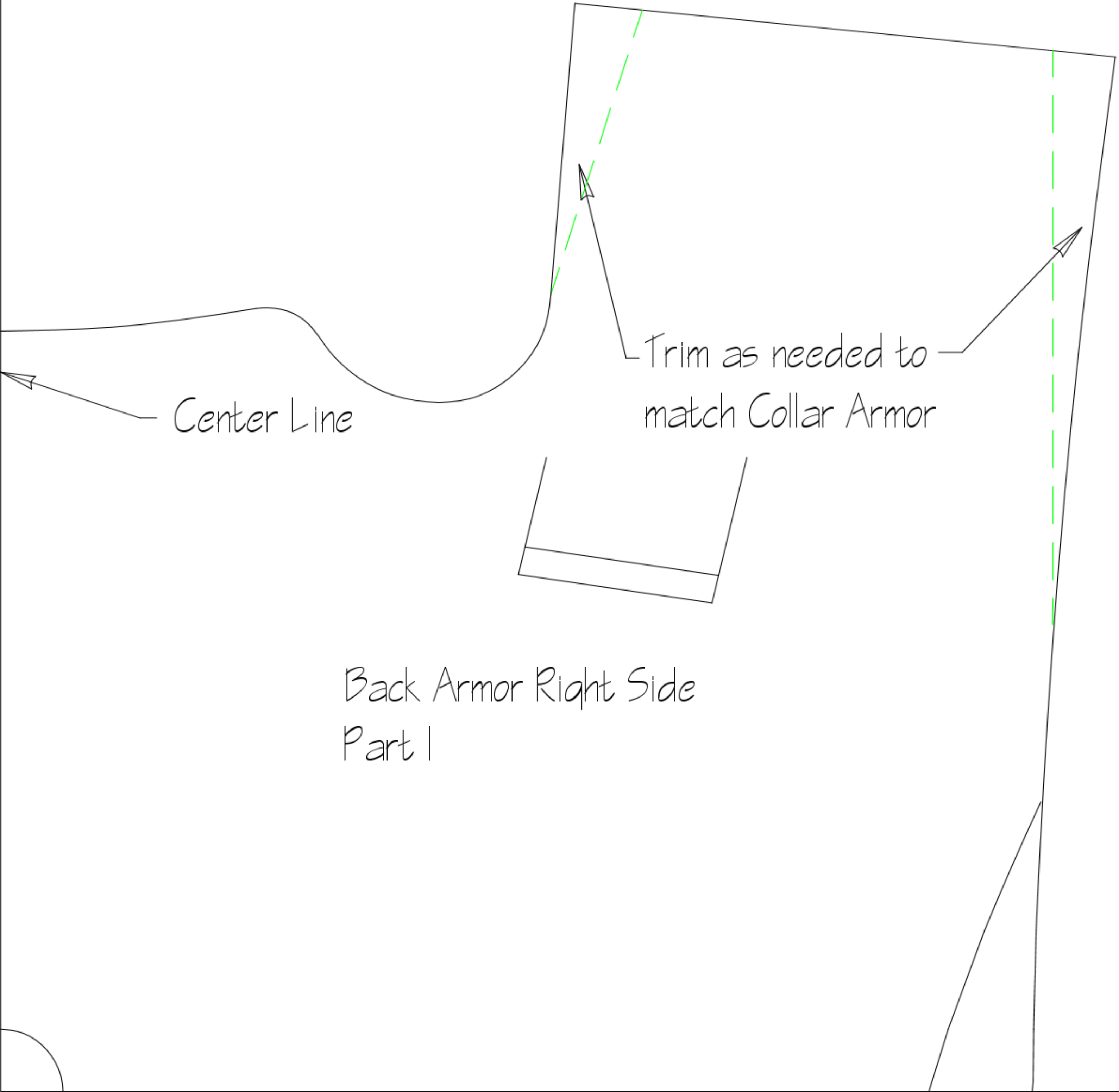


Center Line



Back Armor Left Side  
Part 3

Size - 5'3"



Center Line

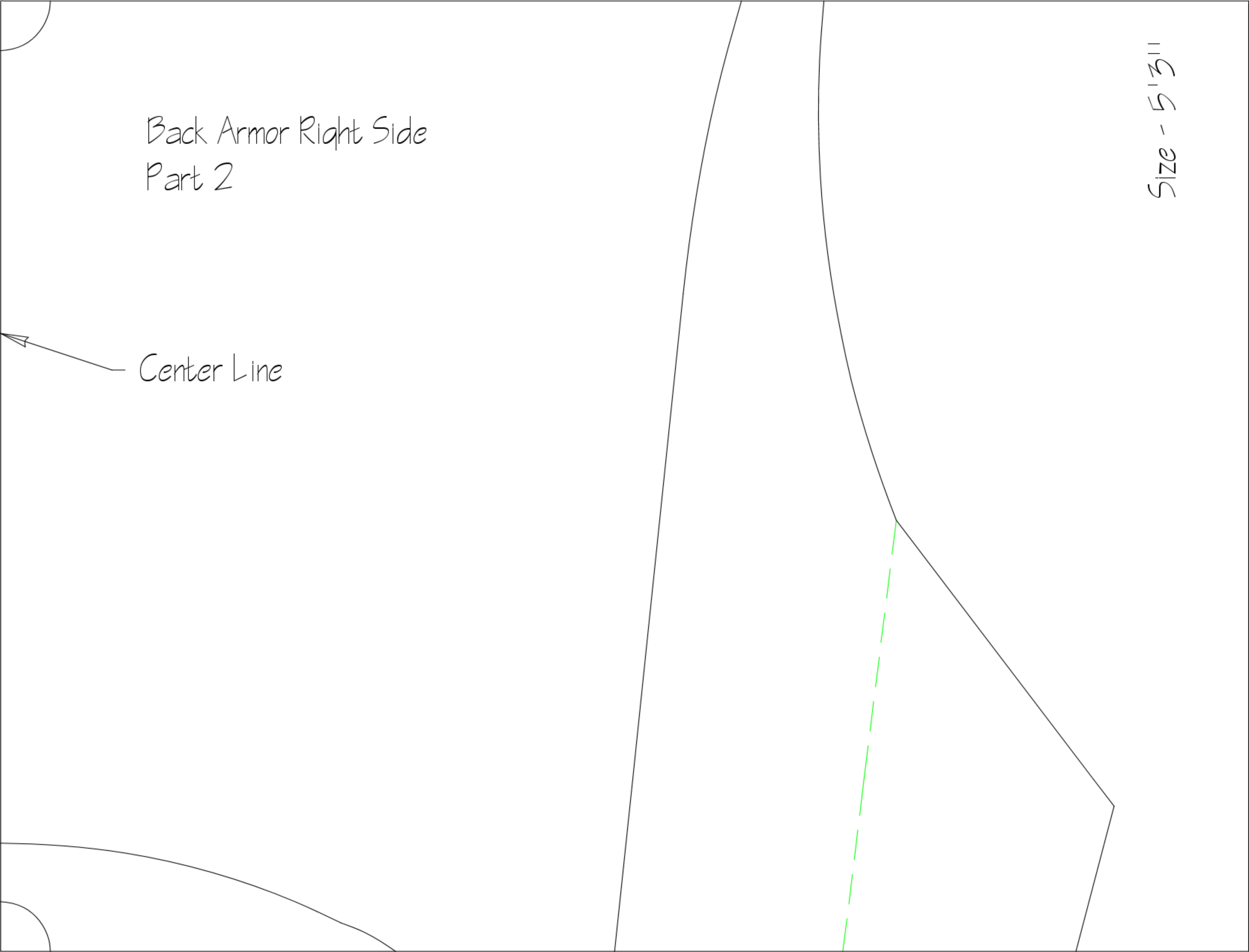
Trim as needed to match Collar Armor

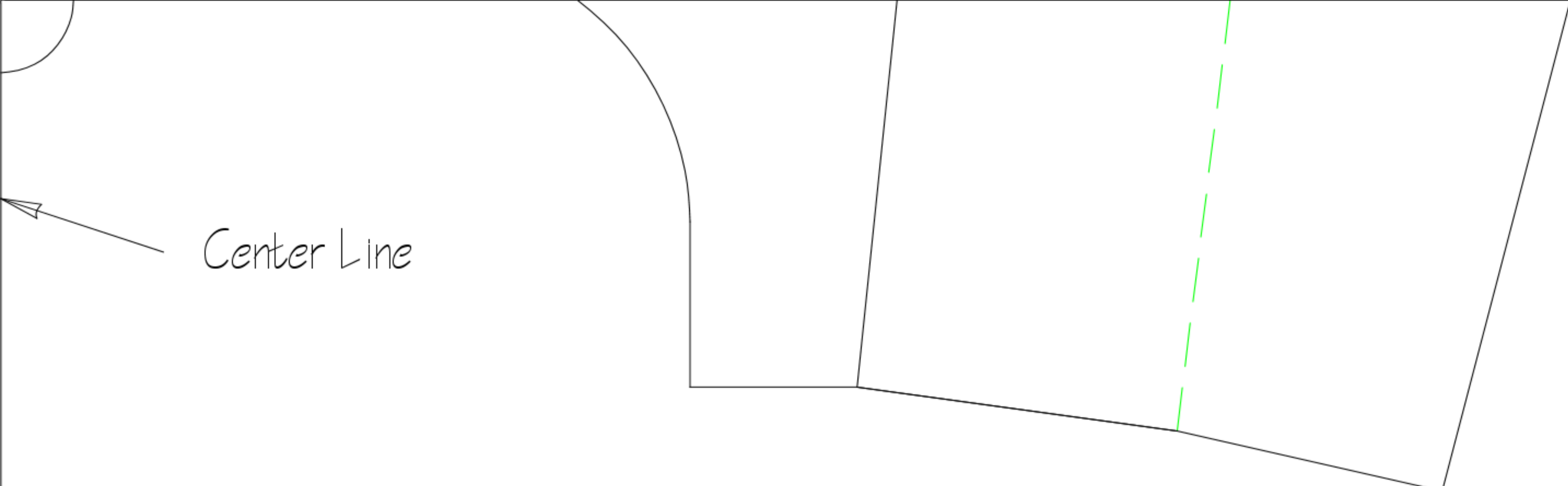
Back Armor Right Side  
Part 1

Back Armor Right Side  
Part 2

Center Line

Size - 5'3"





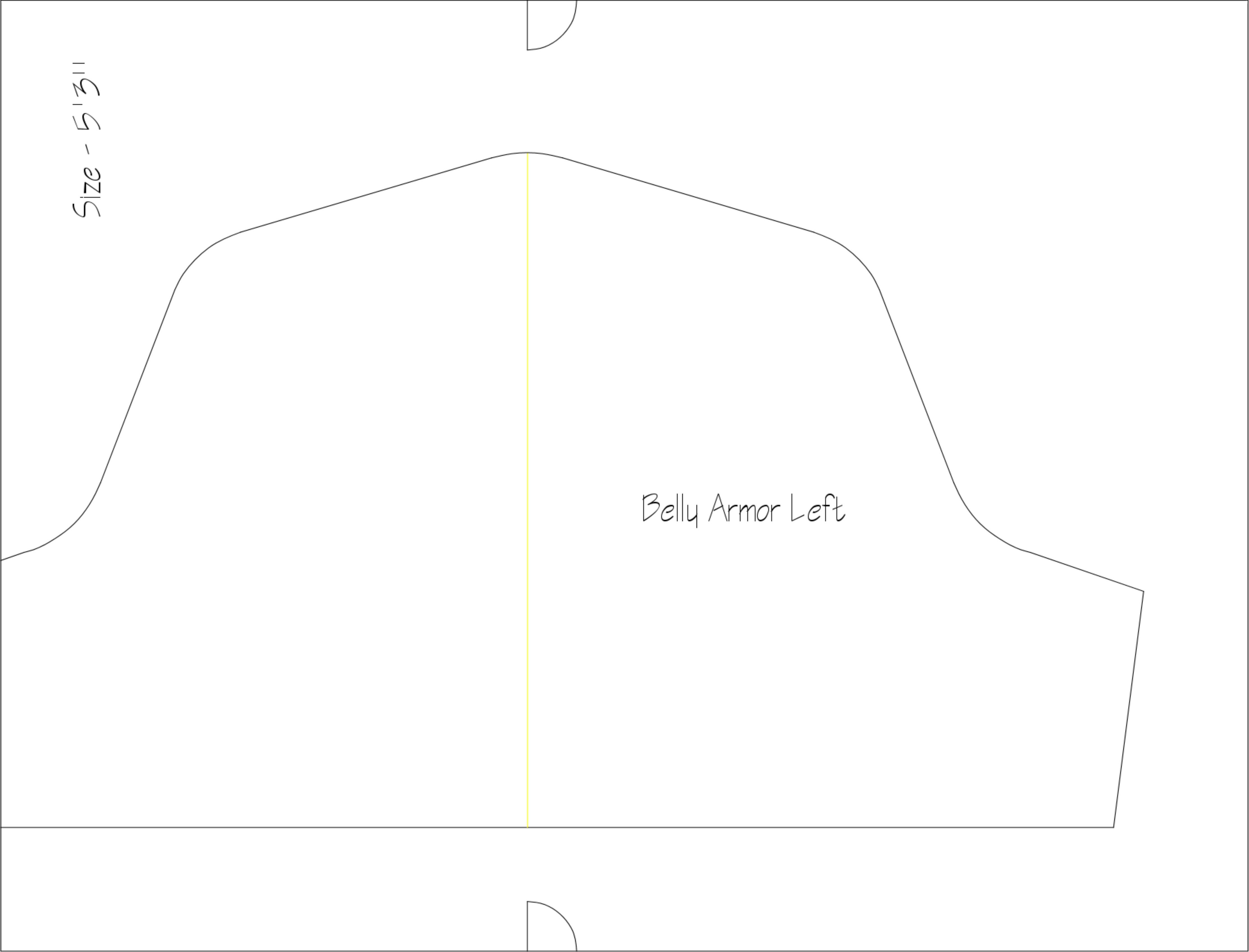
Size - 5'3"

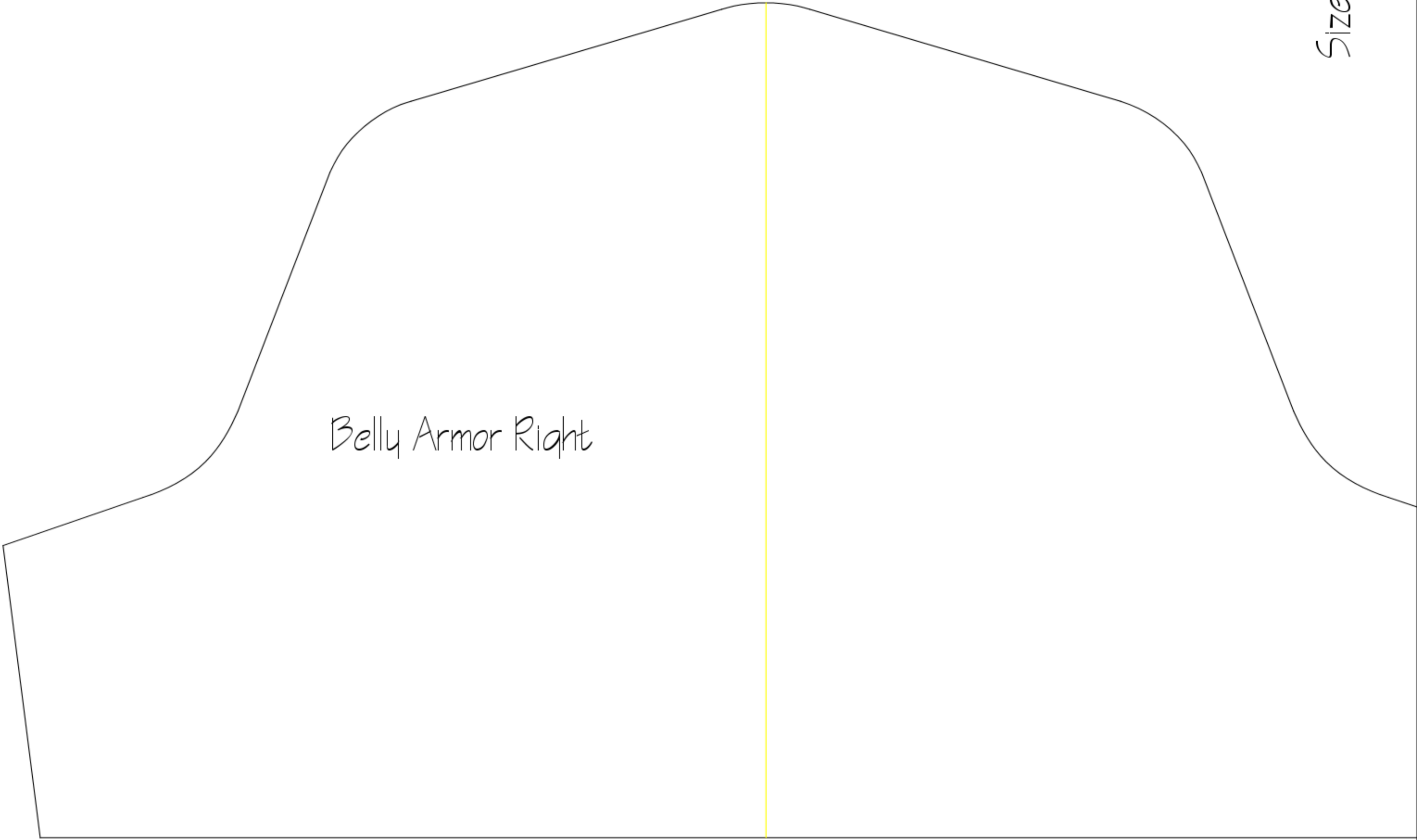
Back Armor Right Side  
Part 3



Size - 5'3"

Belly Armor Left





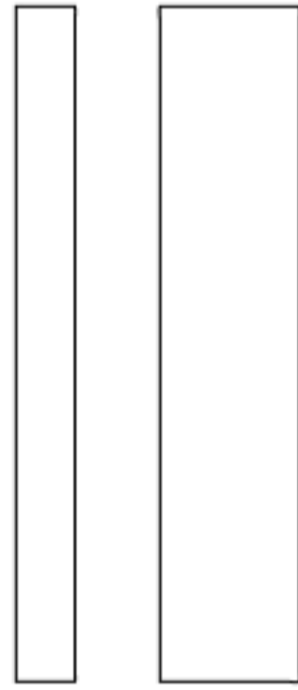
Belly Armor Right

Size - 5'3"

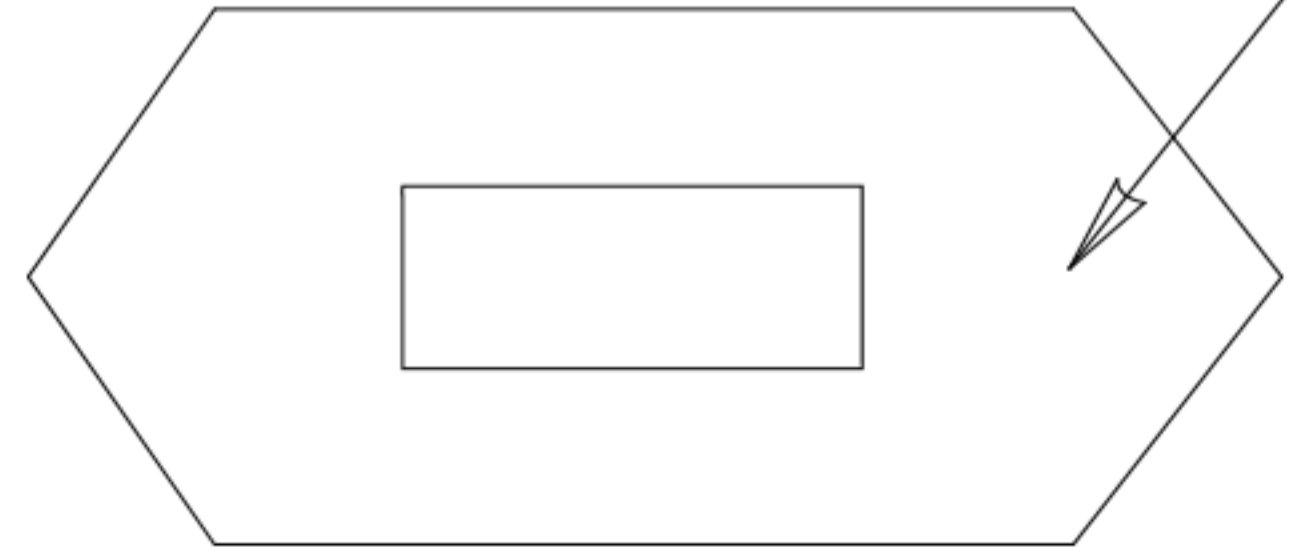
Size - 5'3"

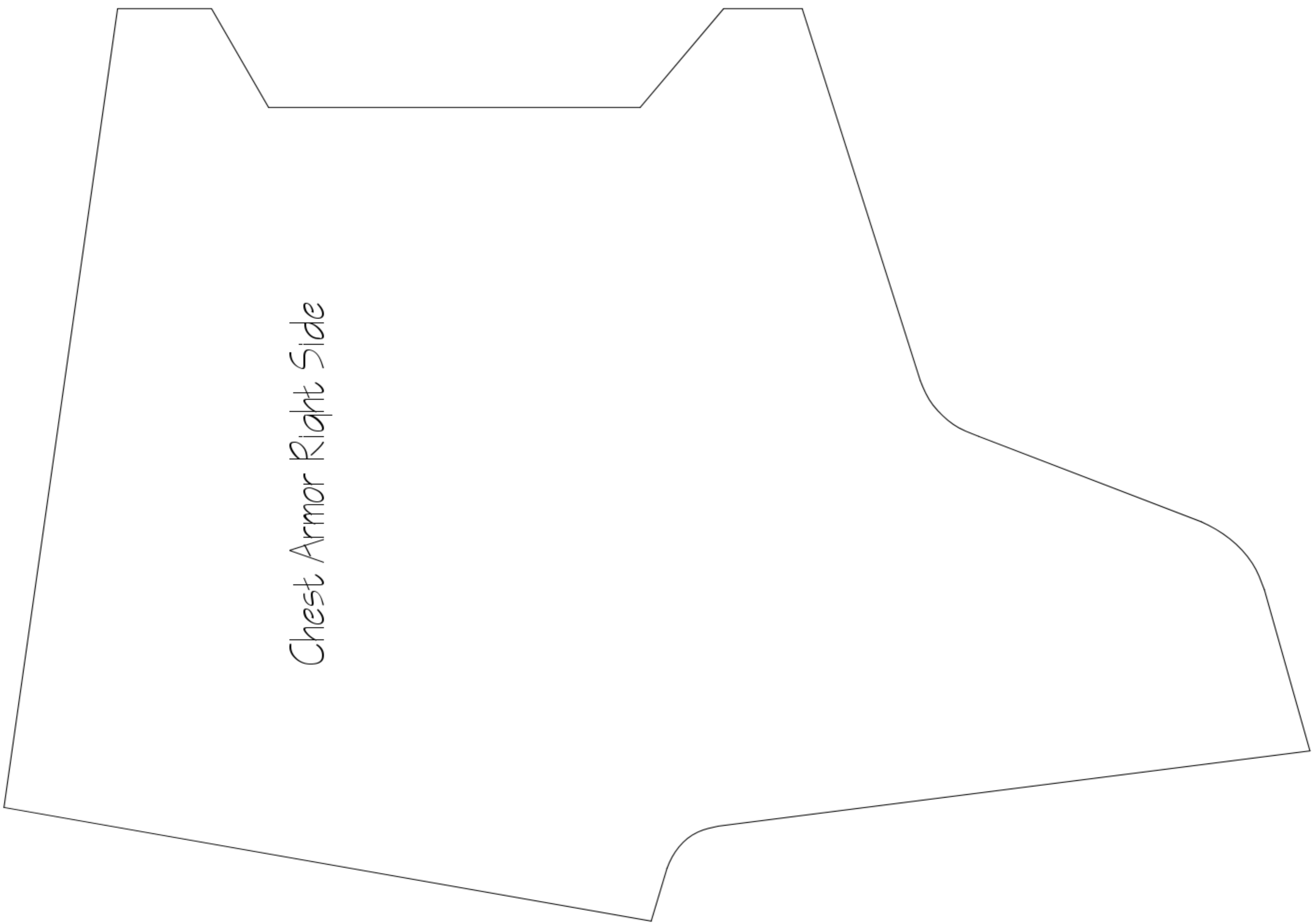
NOTE: The chest display slots drawn are for reference only.  
Before cutting the slots for chest lighting verify  
all dimensions needed to fit your lighting kit before cutting.

Chest Armor Left Side



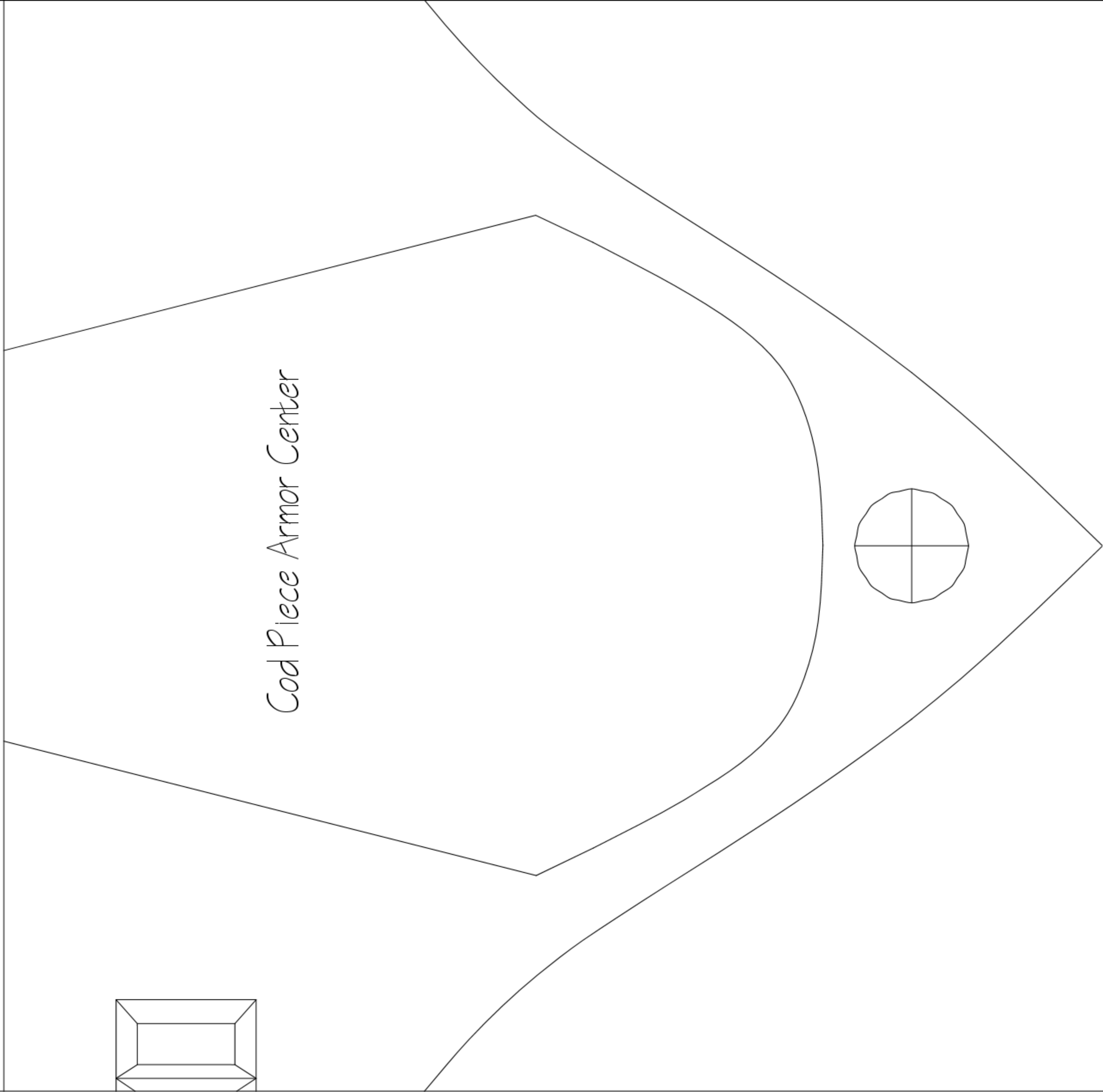
Chest Medallion



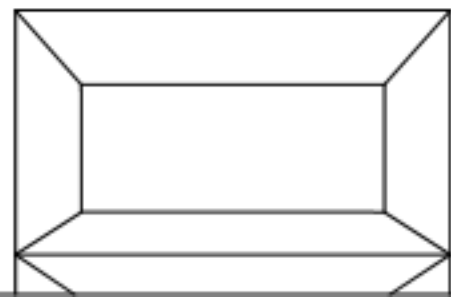


Chest Armor Right Side

Size - 5'3"



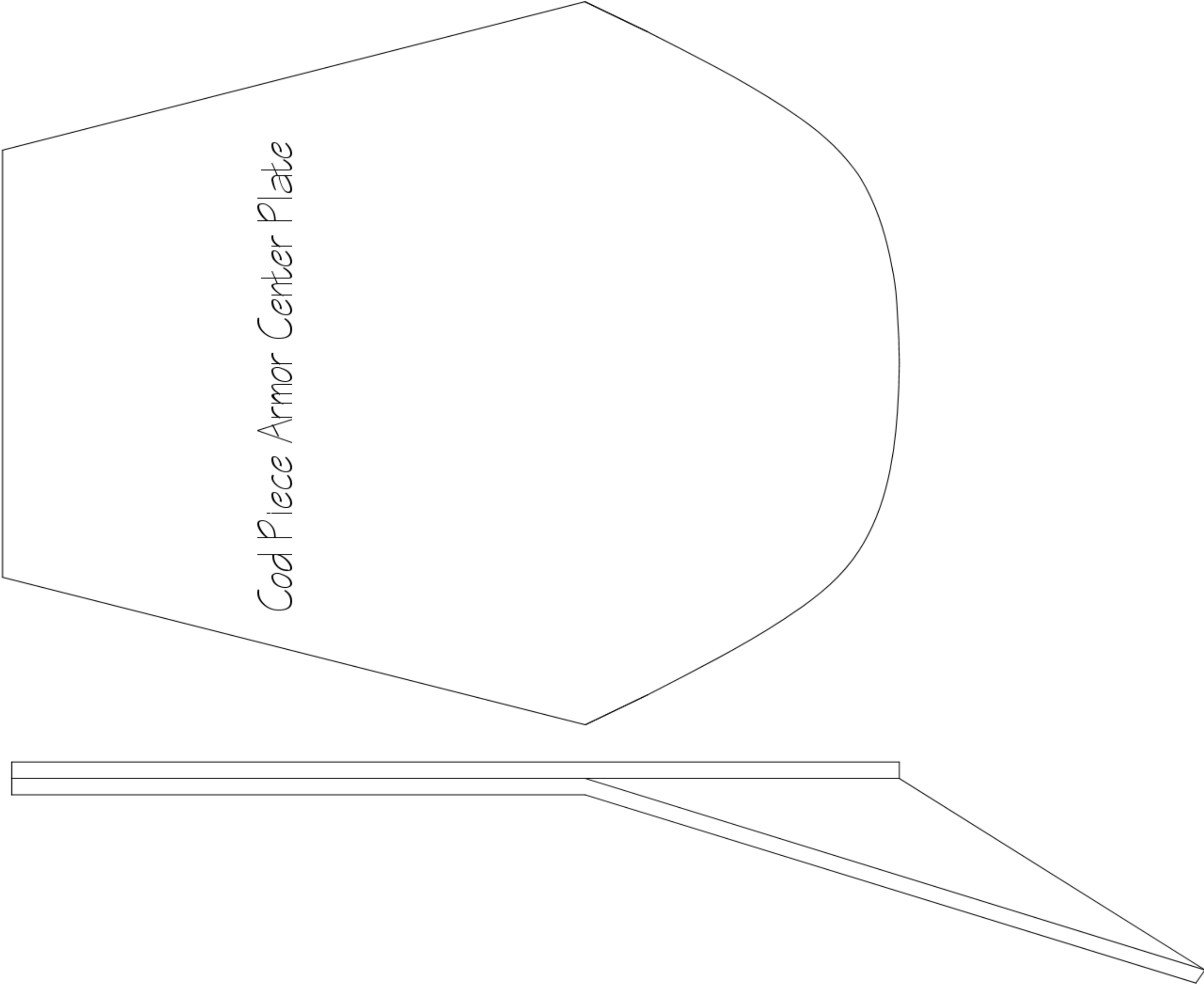
*Cod Piece Armor Center*



Size - 5'3"

Cod Piece Armor Side View

Size - 5'3"

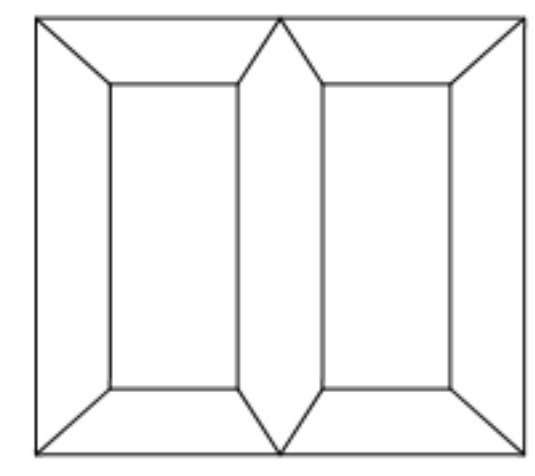


Size - 5'3"

Cod Piece Armor Left

Size - 5'3"

Cod Piece Armor Right





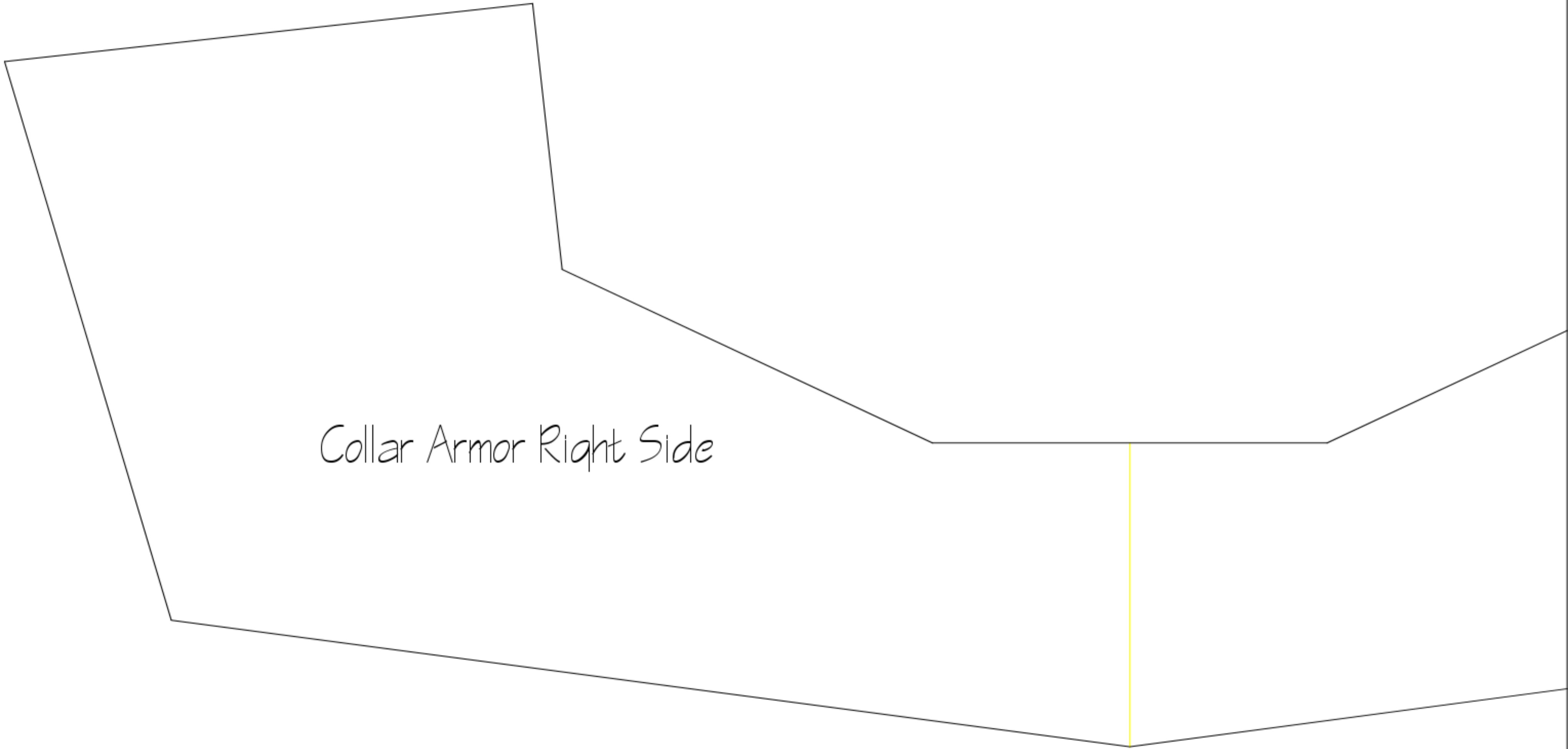


Collar Armor Left Side

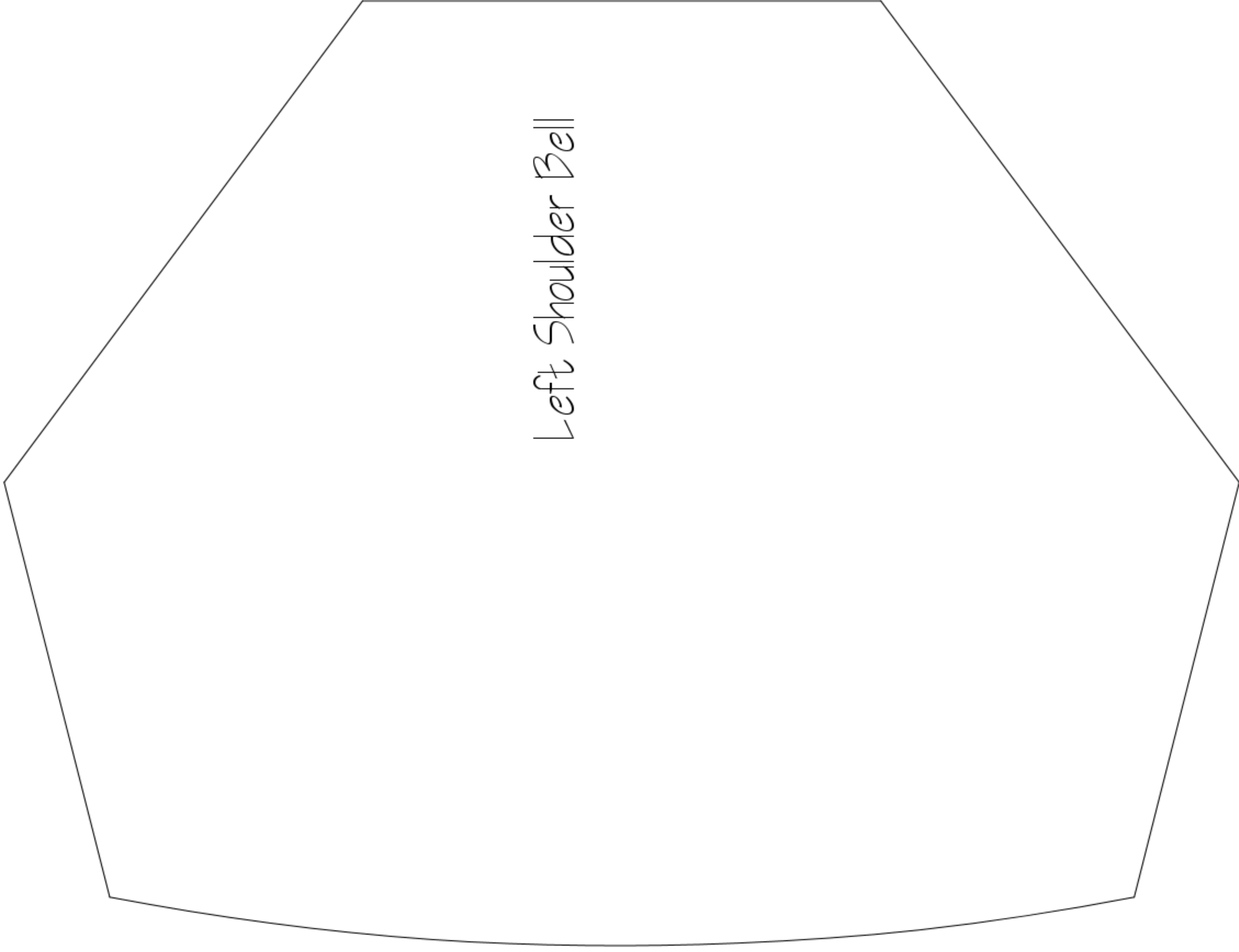
Size - 5'3"

Size - 5'3"

Collar Armor Right Side

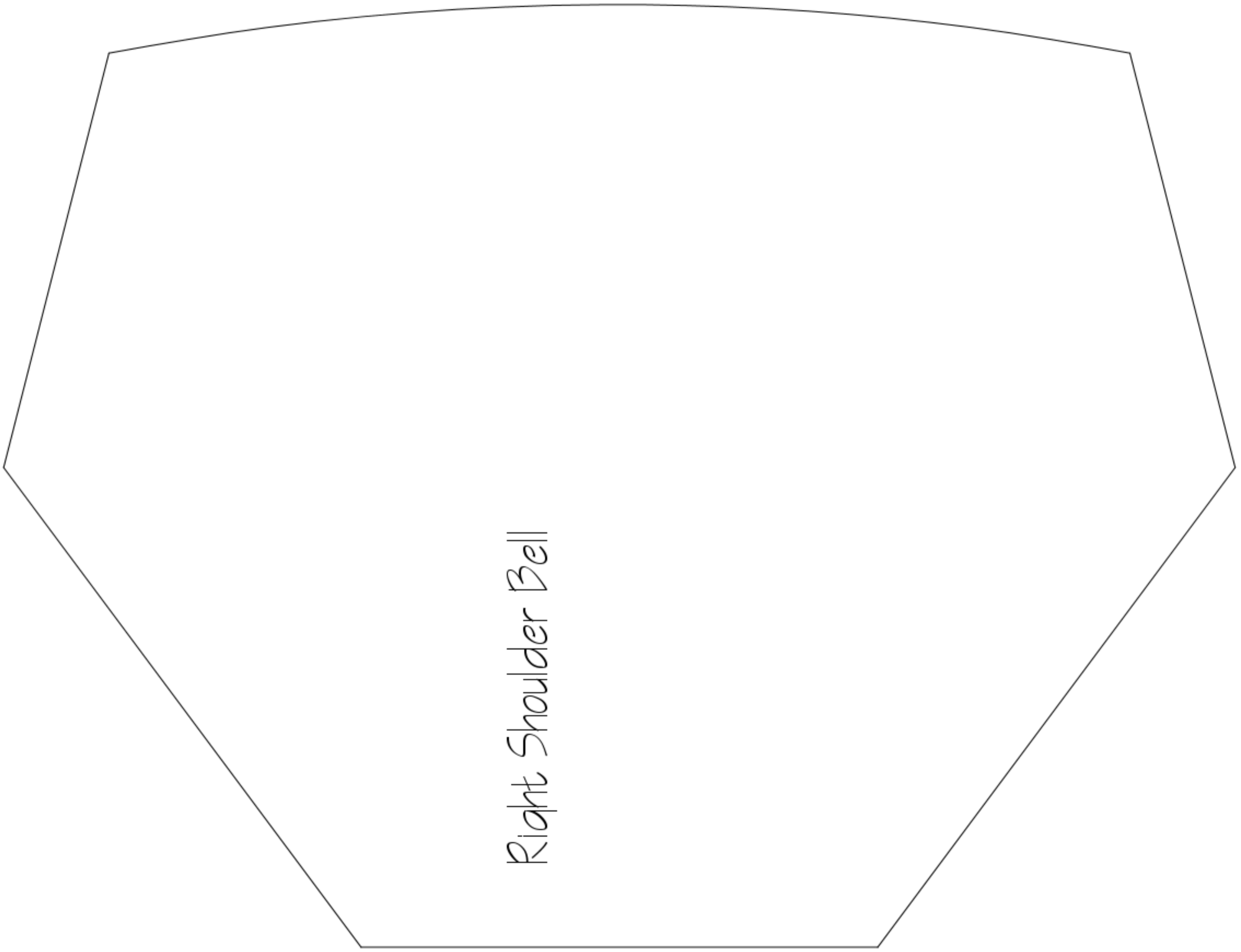






Left Shoulder Bell

Size - 5'3"



Right Shoulder Bell

Size - 5'3"