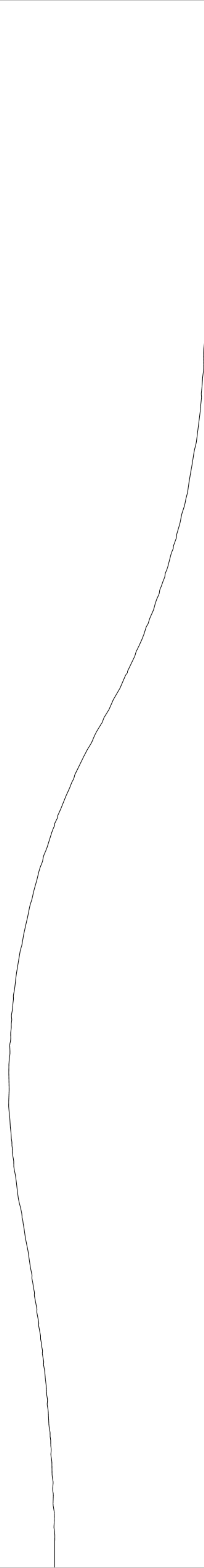
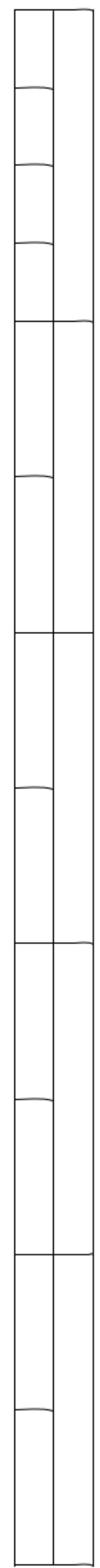
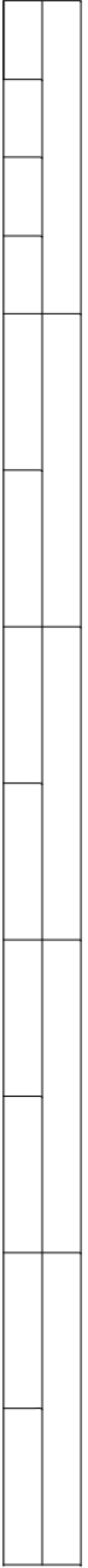


Size - Large



Back Belt Armor Left





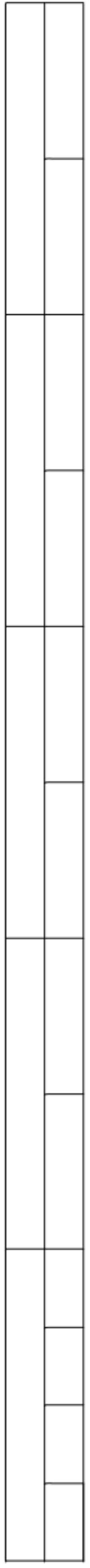
Back Belt Armor Right

Size - Large



Back Armor Left Side
Part I

Size - Large



Back Armor Left Side
Part 2

Center Line



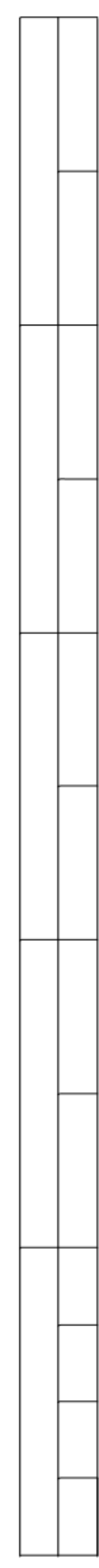
B

Size - Large

Center Line

Back Armor Left Side
Part 3

B



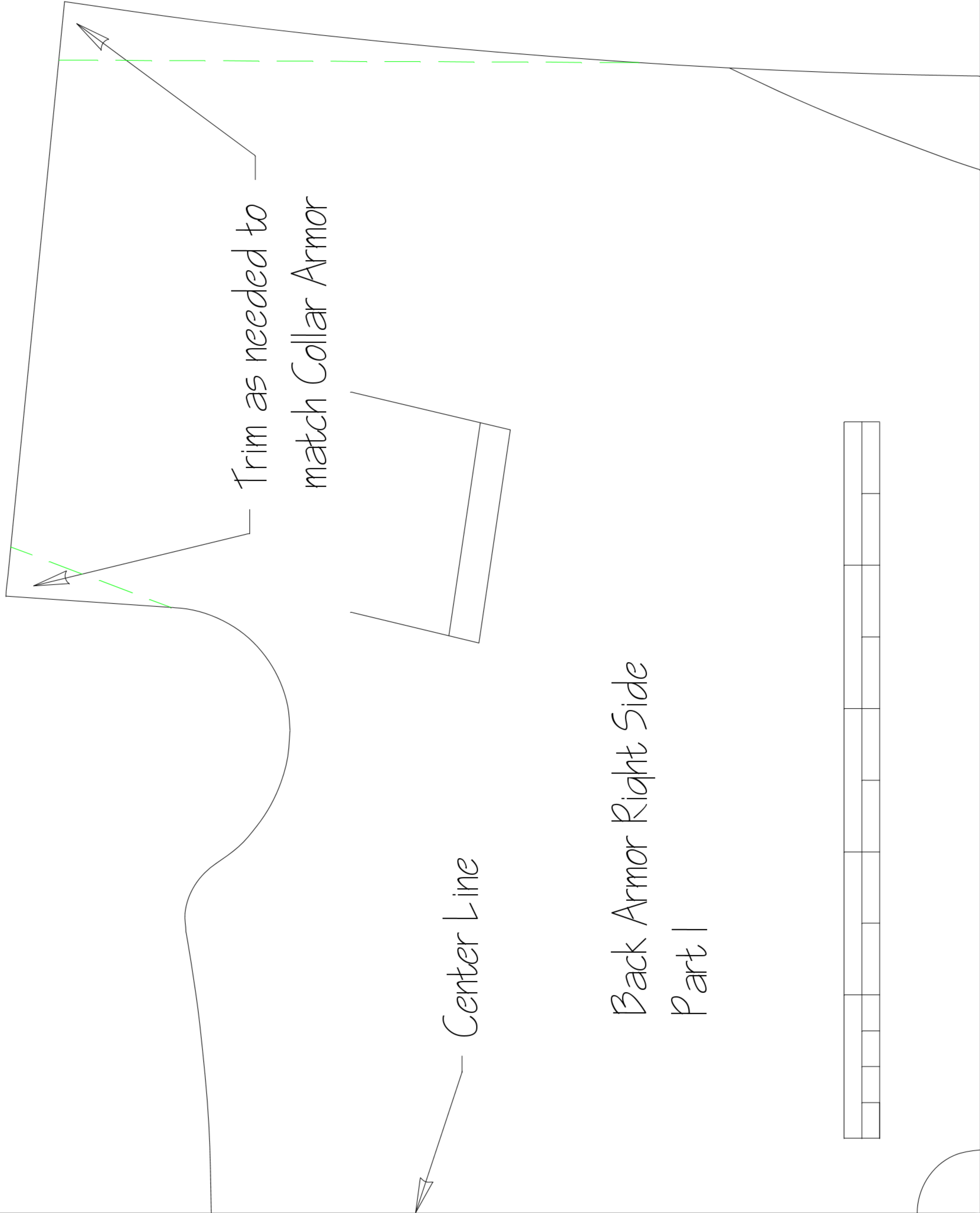
Back Armor Left Side
Part 4

B

B

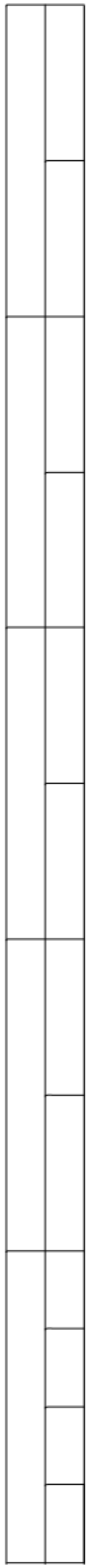
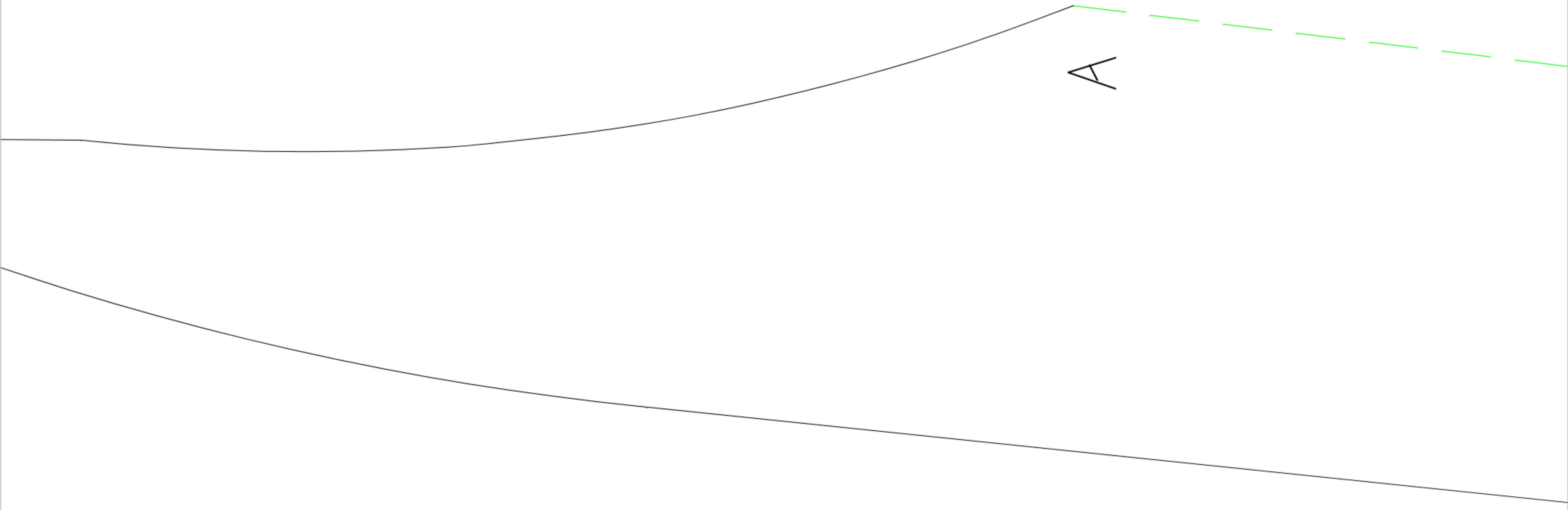
Size - Large

Size - Large



Back Armor Right Side
Part I

Size - Large



Back Armor Right Side
Part 2

Center Line

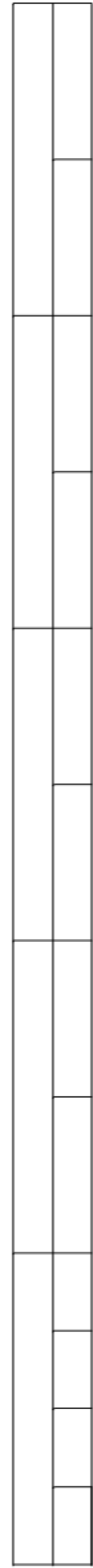
An arrow pointing from the text 'Center Line' to the bottom edge of the pattern area, indicating the central axis of the garment.

Size - Large

Center Line

Back Armor Right Side
Part 3

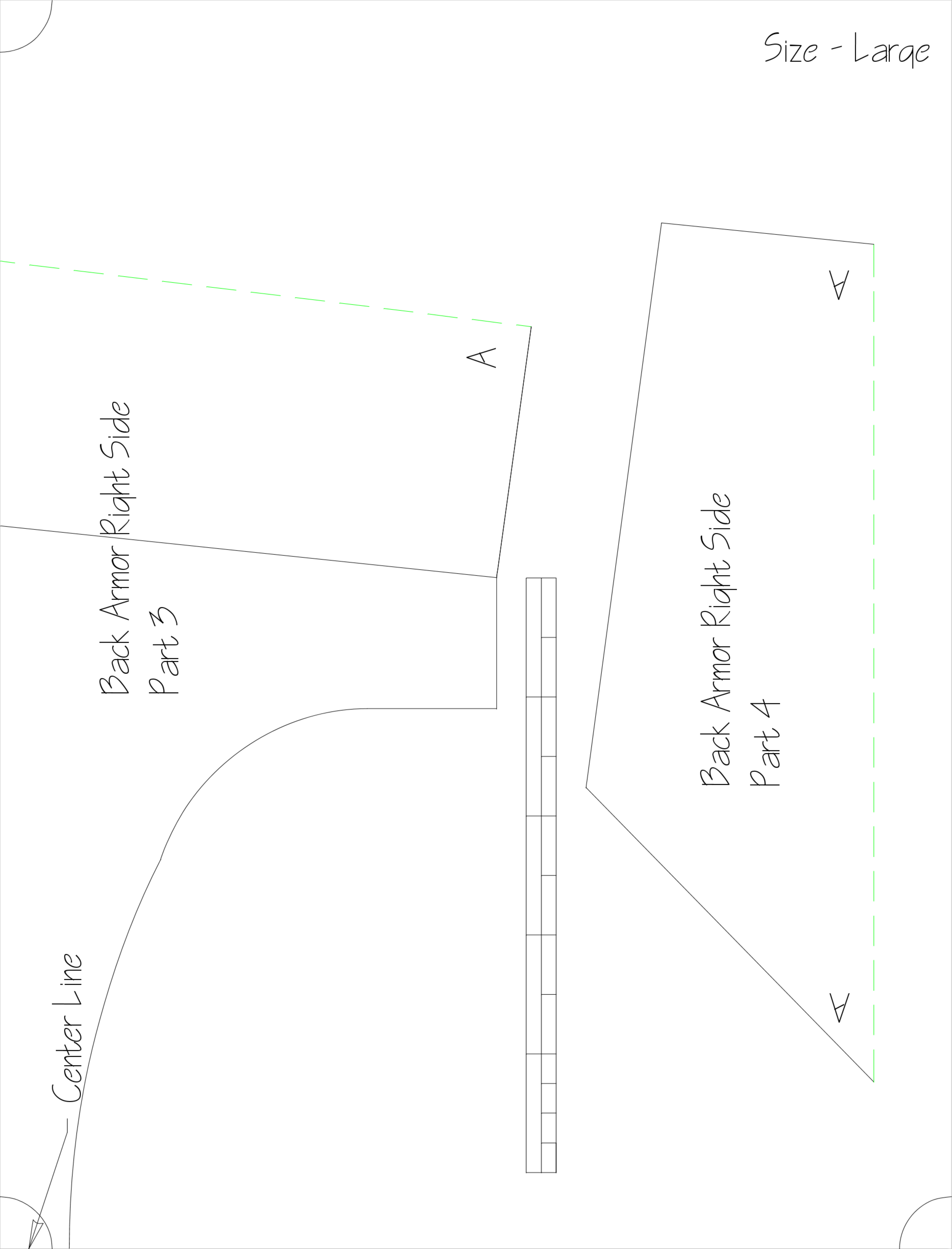
A

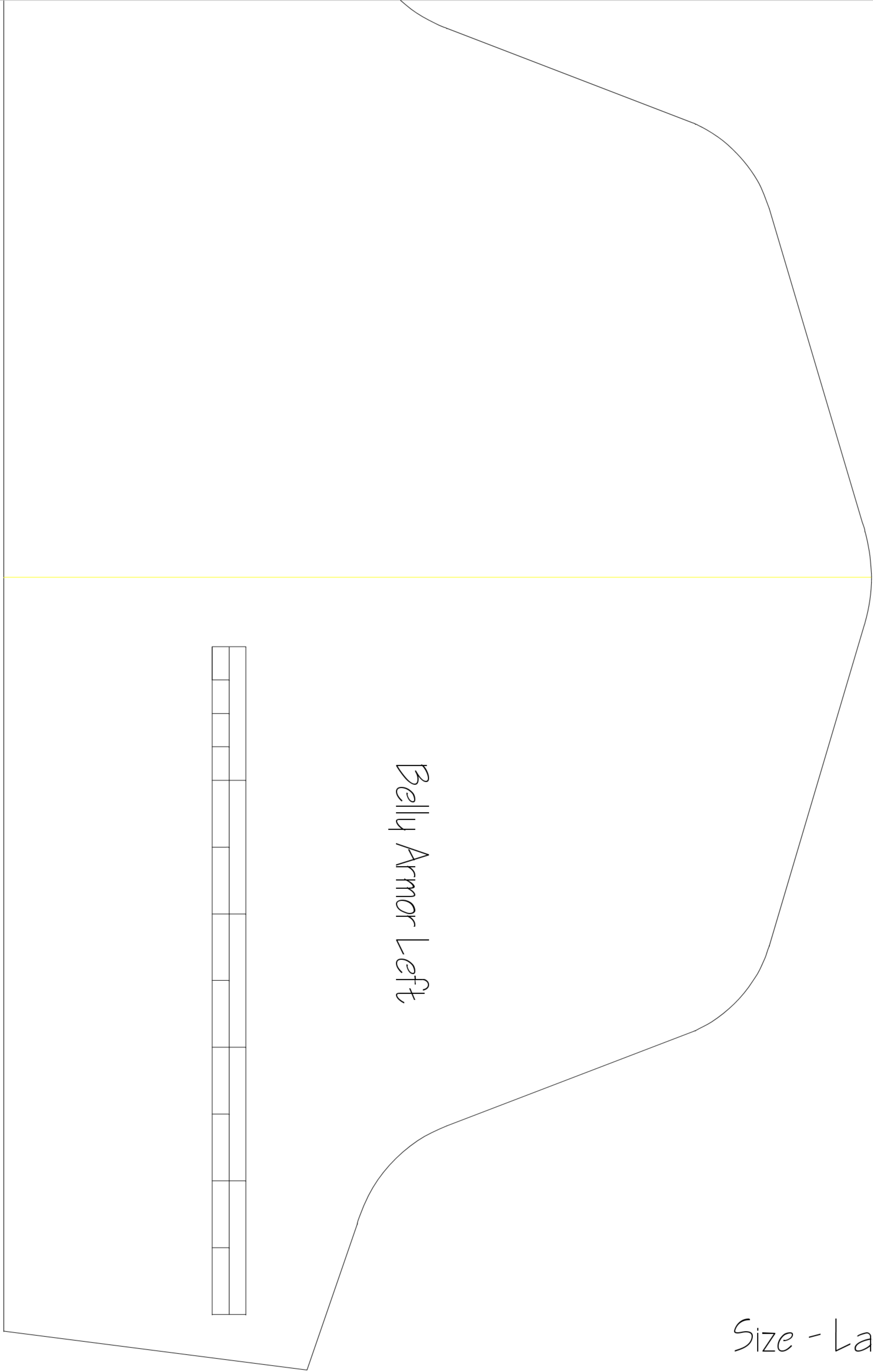


Back Armor Right Side
Part 4

A

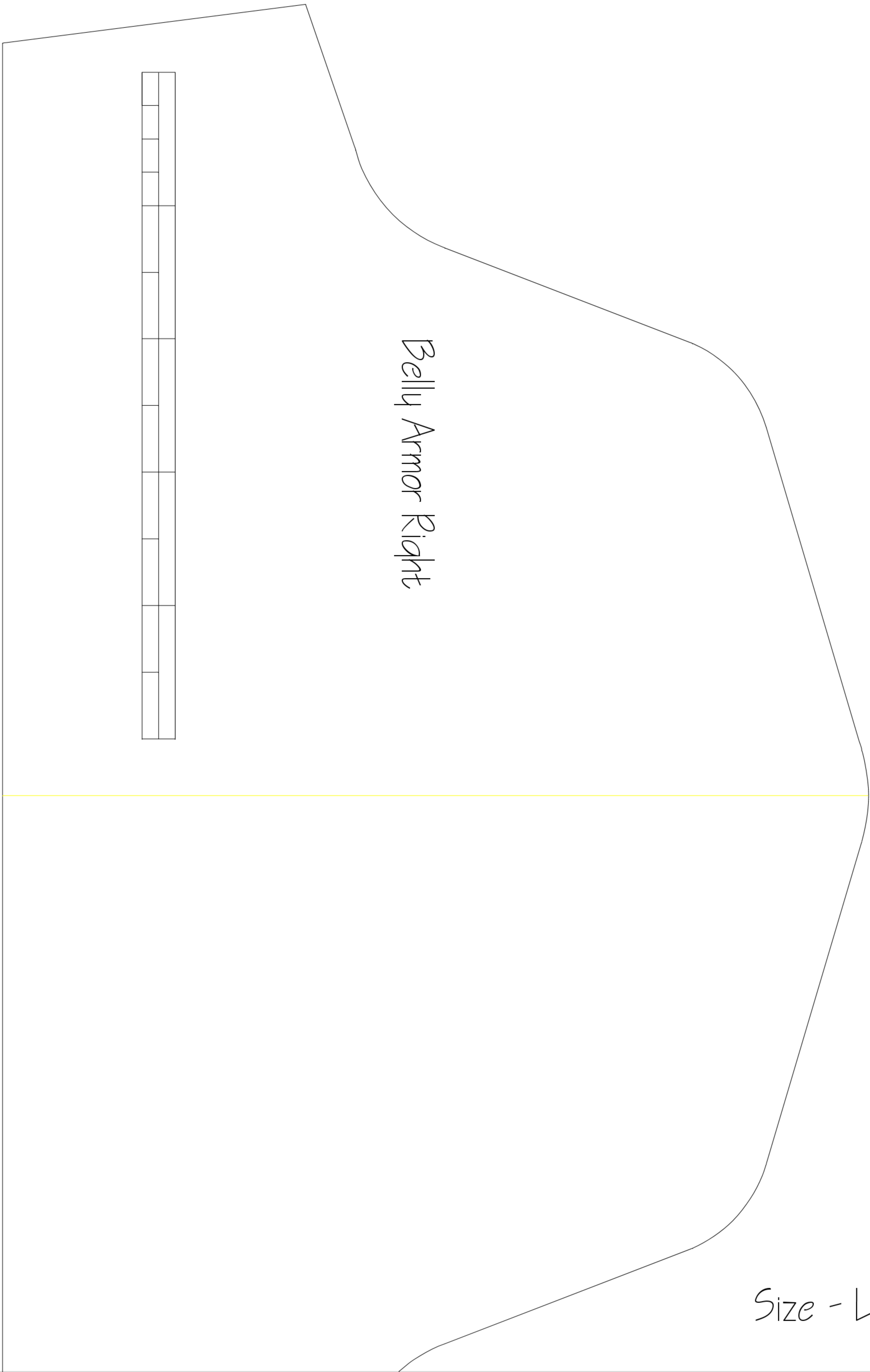
A





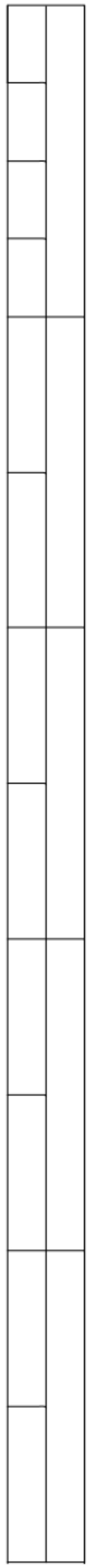
Belly Armor Left

Size - Large

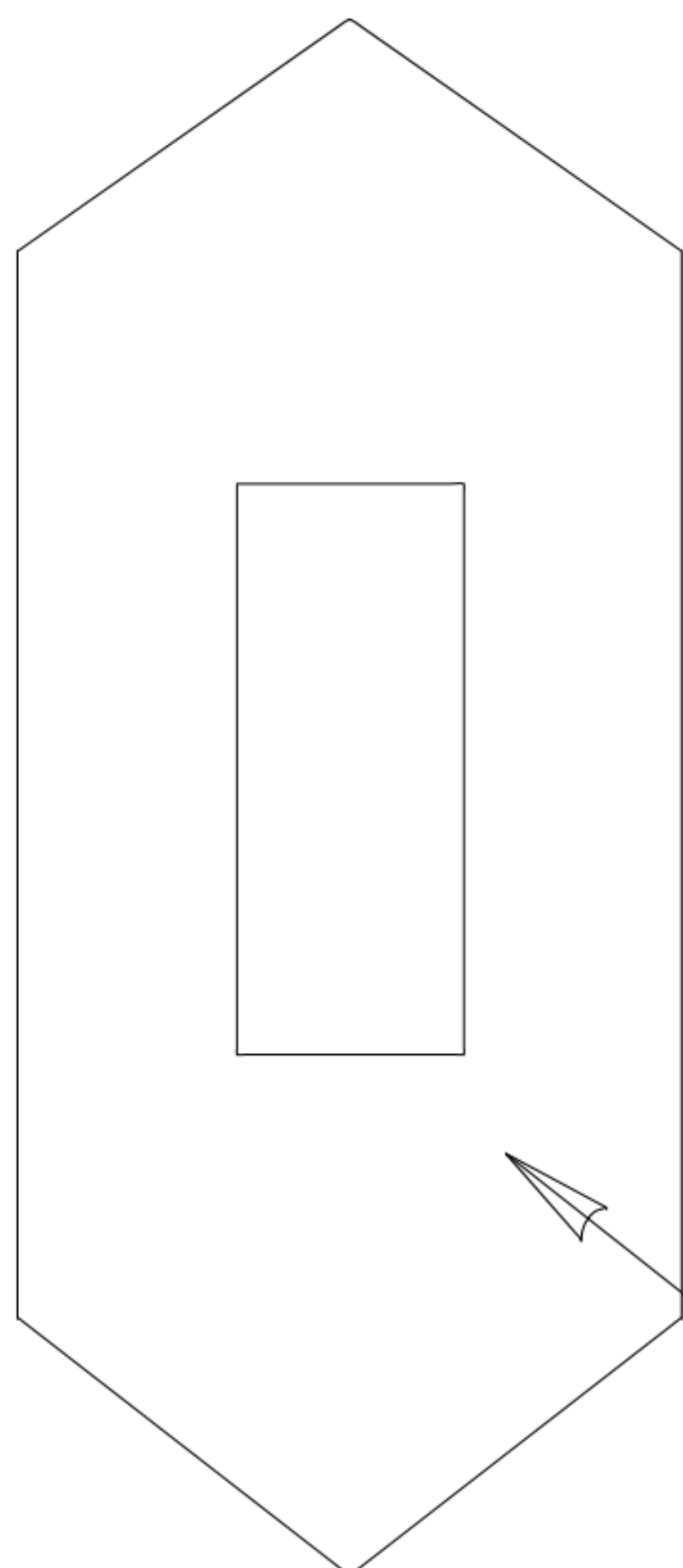
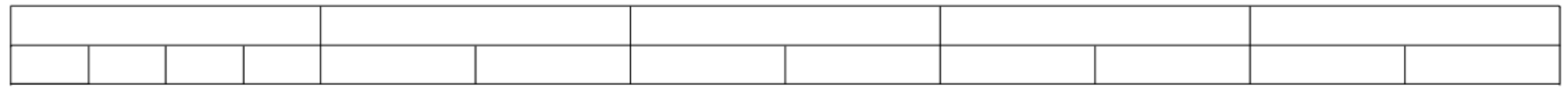
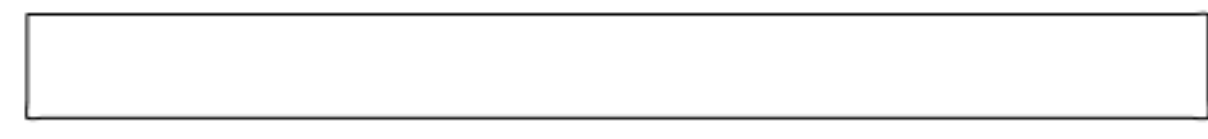


Belly Armor Right

Size - Large



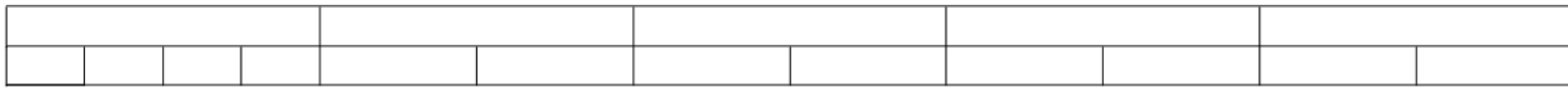
Chest Armor Left Side



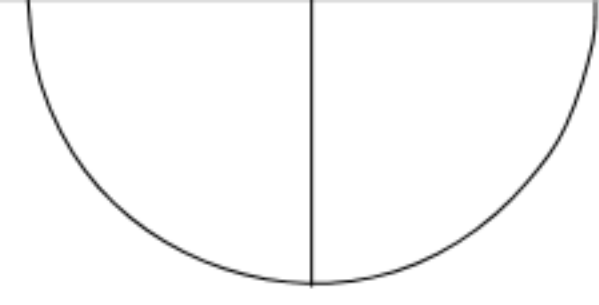
Chest Medallion

Size - Large

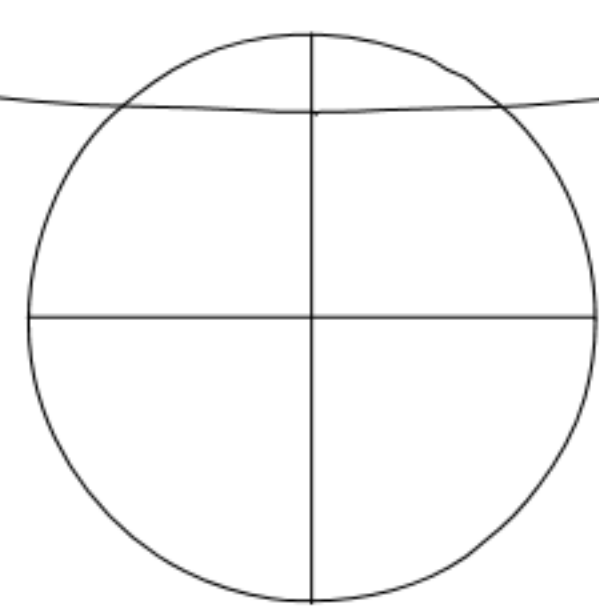
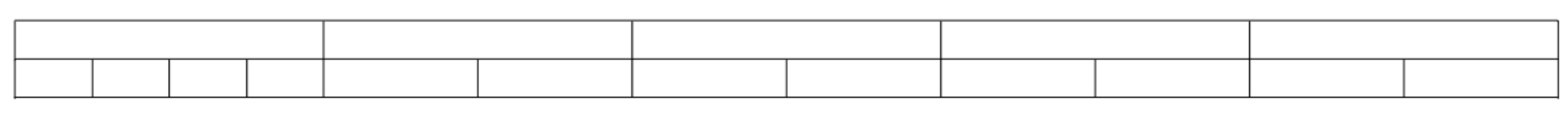
Chest Armor Right Side



Size - Large

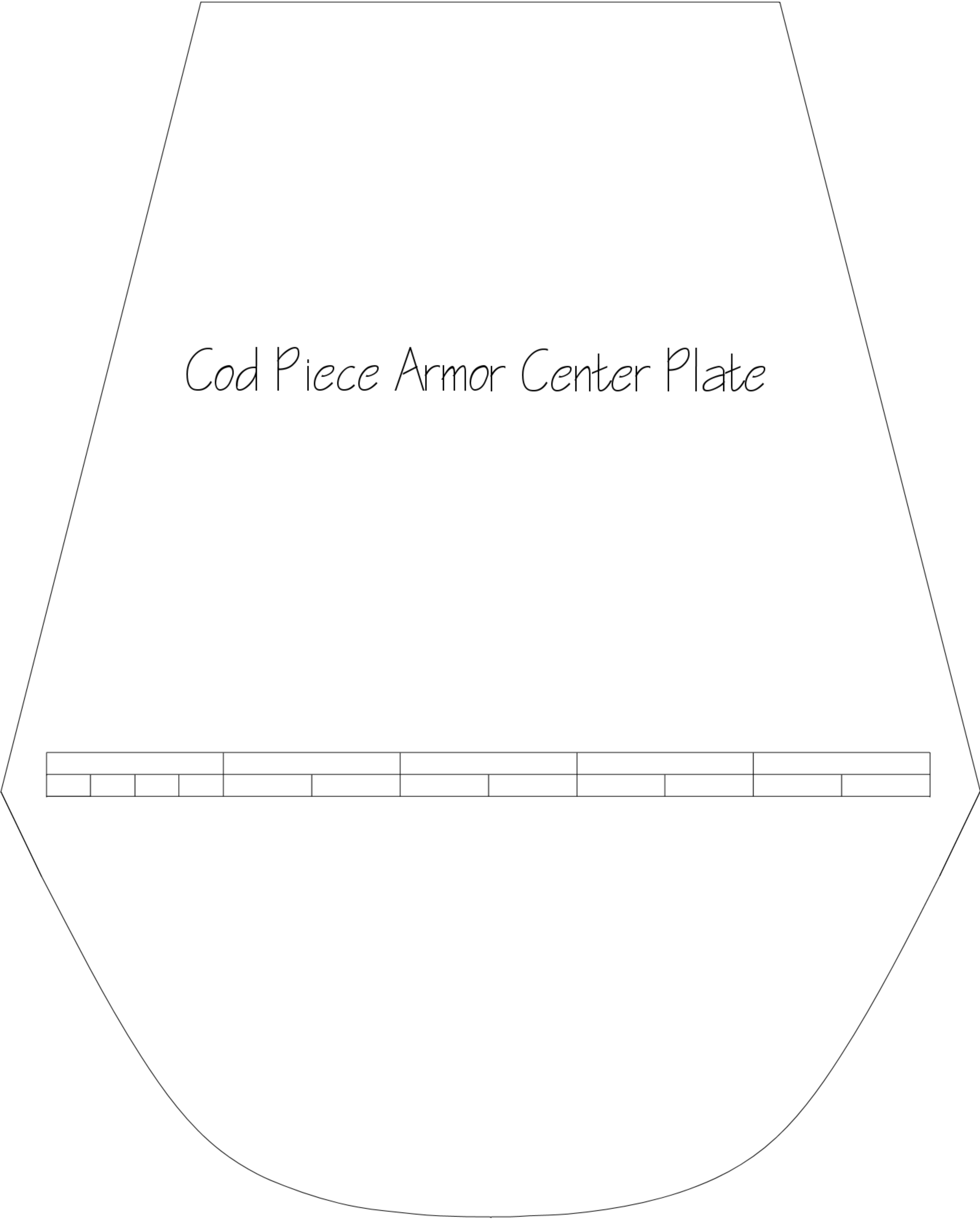
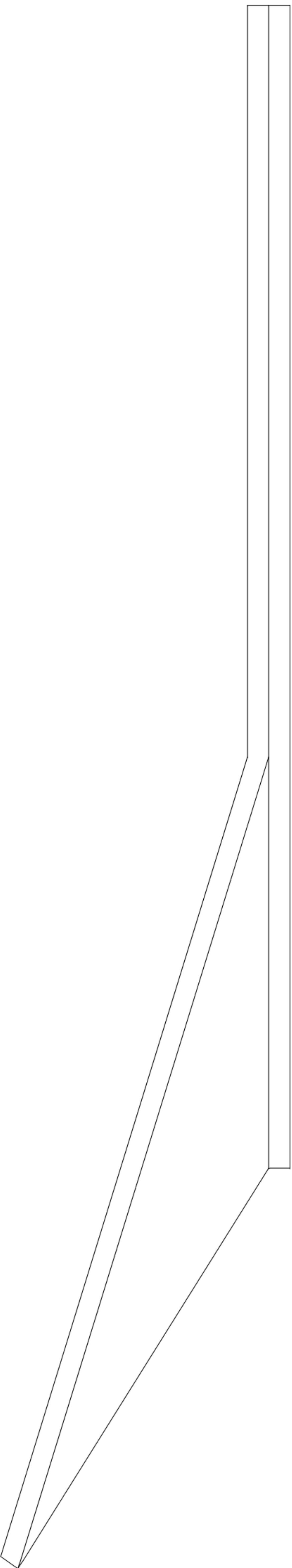


Cod Piece Armor Center



Size - Large

Cod Piece Armor Side View

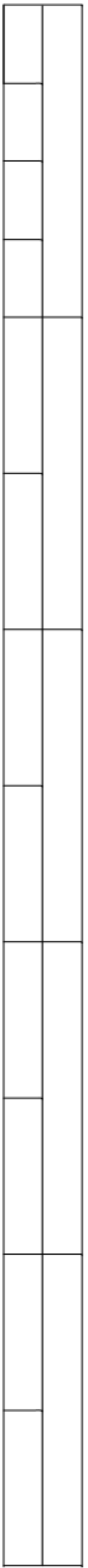


Cod Piece Armor Center Plate

Size - Large

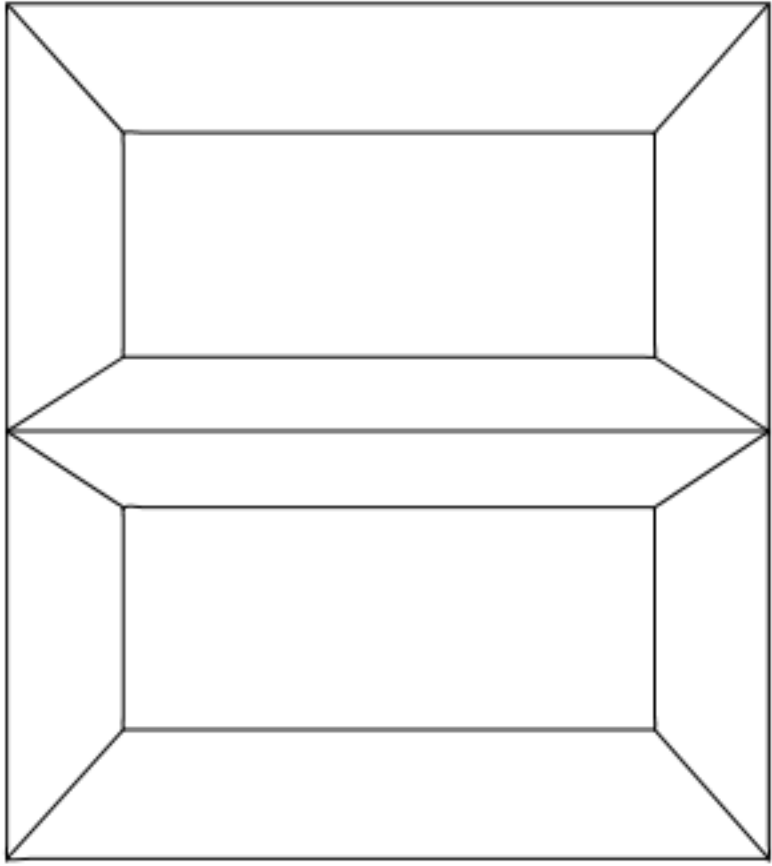
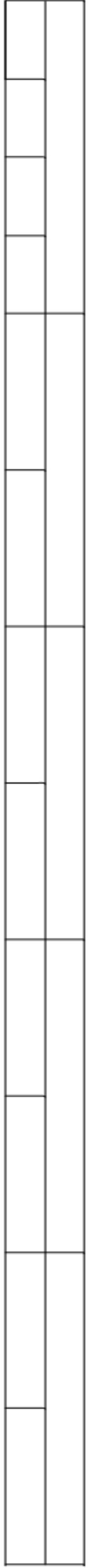
Size - Large

Cod Piece Armor Left

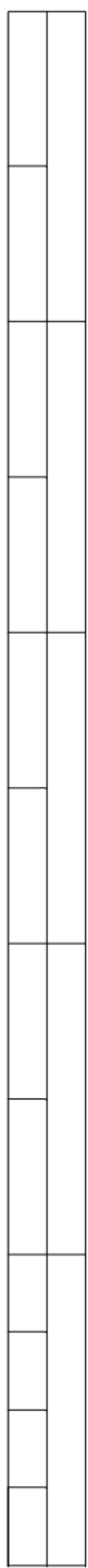


Size - Large

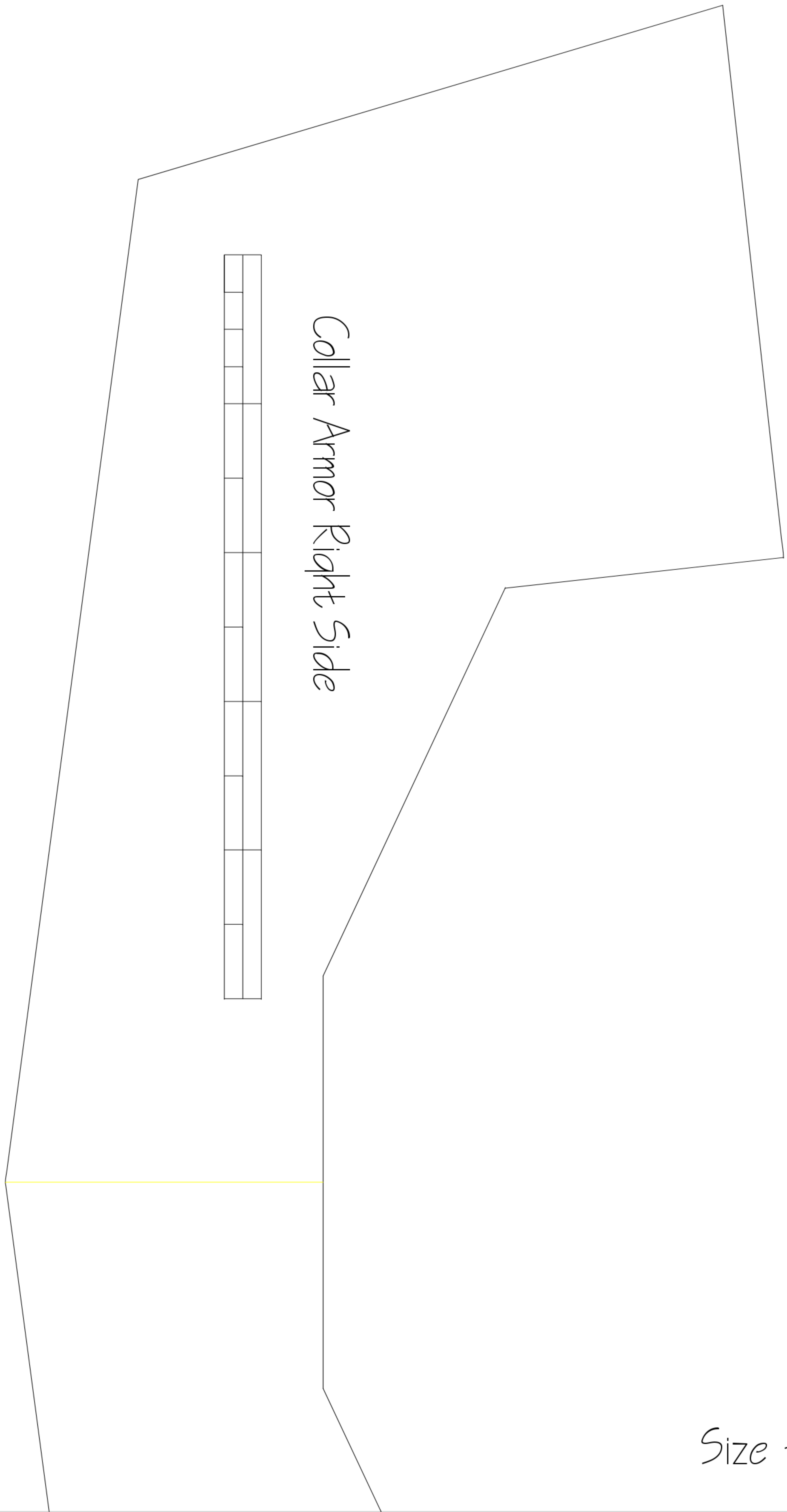
Cod Piece Armor Right



Collar Armor Left Side



Size - Large

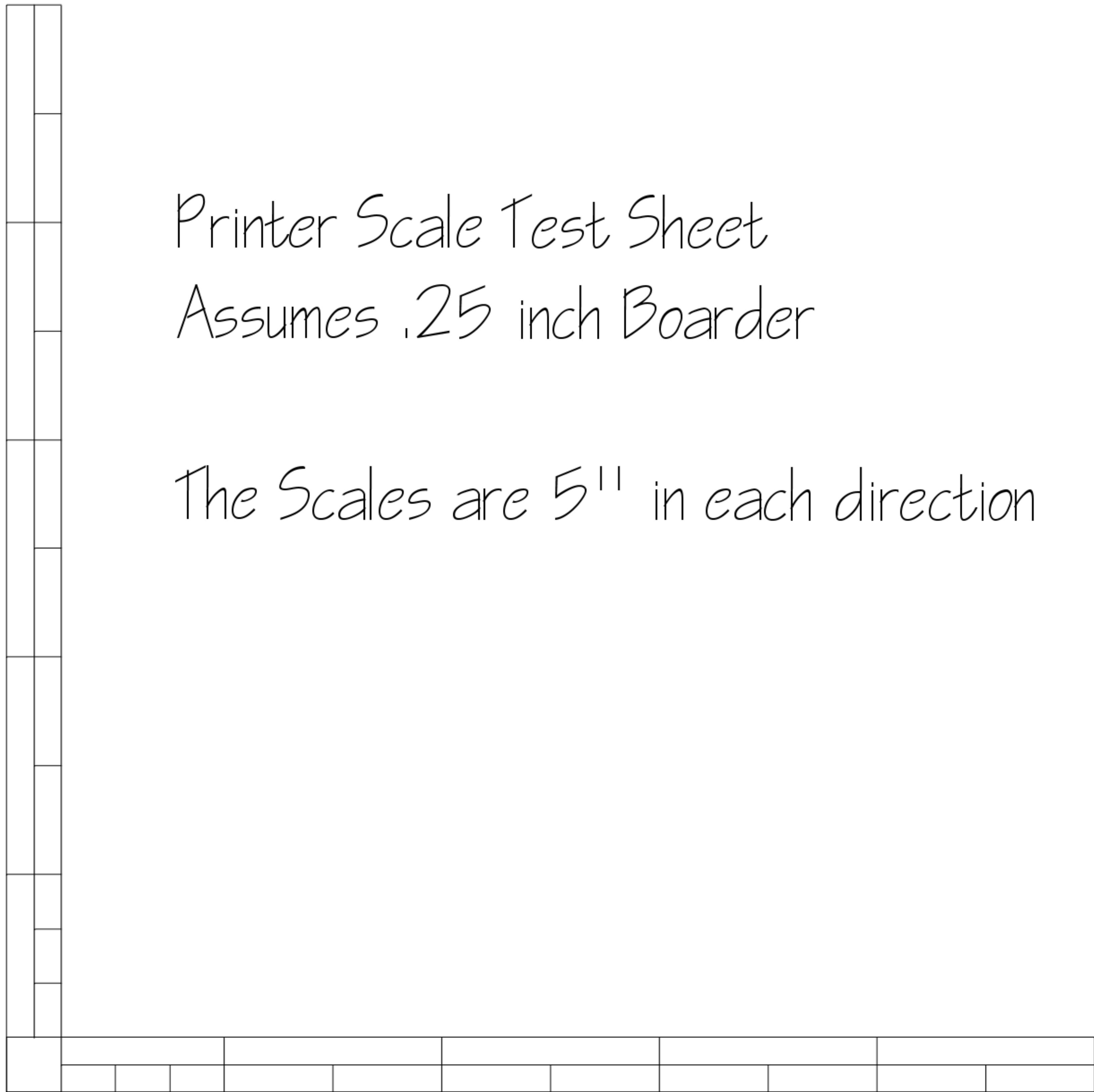


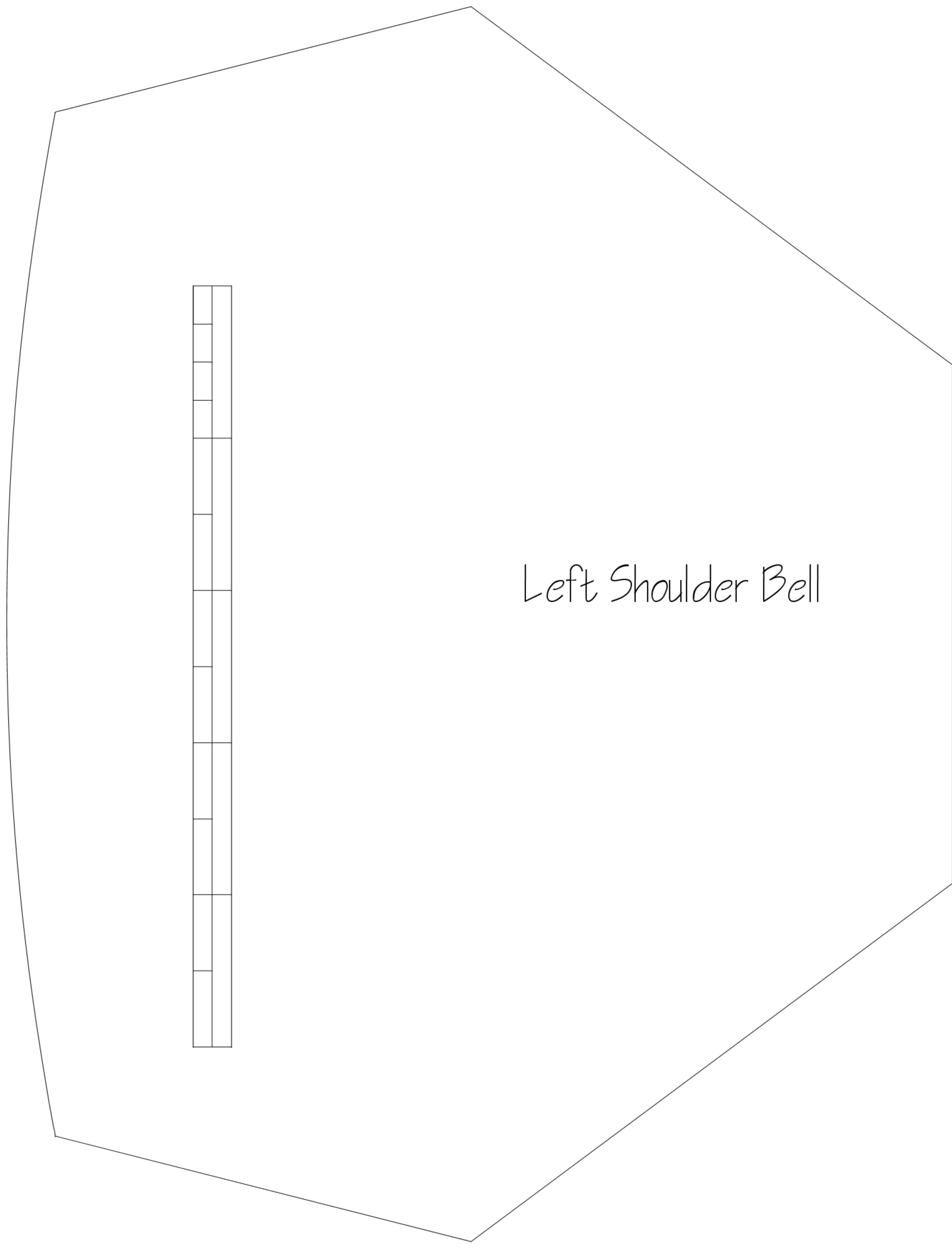
Collar Armor Right Side

Size - Large

Printer Scale Test Sheet
Assumes .25 inch Border

The Scales are 5'' in each direction





Left Shoulder Bell

Size - Large

Size - Large

